

FOR SUBLEASE

1132 ALBERNI STREET
VANCOUVER, BC

RARE PRIVATE WALK-UP OFFICE
WITH PRIVATE DECK



Private walk-up to office.
Elevator also available.



CONTACT ME

Blair Quinn

Vice Chairman, The HTFG
Personal Real Estate Corporation
+1 604-662-5161 | blair.quinn@cbre.com

HT
FG

THE HIGH
TECHNOLOGY
FACILITIES GROUP

CBRE

FOR SUBLEASE | 1132 ALBERNI STREET

PROPERTY DETAILS

FLOOR	200
AREA	15,387 SF
ASKING RATE	Please Contact Agent
TAXES & OP COSTS <i>Excluding hydro & cleaning</i>	\$18.08 PSF (2022 Est.)
TERM	Flexible
AVAILABLE	Immediately
FURNITURE	Fully Furnished & Available

HIGHLIGHTS

- Second floor walk-up office with private entrance and elevator access
- Open office with enough space for +110 work stations
- 7 meeting rooms/private offices
- 2 large boardrooms
- Large expansive south-facing outdoor private patio
- Large kitchen
- Reception area

[Click to Tour
Space Virtually](#)



This disclaimer shall apply to CBRE Limited, Real Estate Brokerage, and to all other divisions of the Corporation; to include all employees and independent contractors ("CBRE"). The information set out herein, including, without limitation, any projections, images, opinions, assumptions and estimates obtained from third parties (the "Information") has not been verified by CBRE, and CBRE does not represent, warrant or guarantee the accuracy, correctness and completeness of the Information. CBRE does not accept or assume any responsibility or liability, direct or consequential, for the Information or the recipient's reliance upon the Information. The recipient of the Information should take such steps as the recipient may deem necessary to verify the Information prior to placing any reliance upon the Information. The Information may change and any property described in the Information may be withdrawn from the market at any time without notice or obligation to the recipient from CBRE. CBRE and the CBRE logo are the service marks of CBRE Limited and/or its affiliated or related companies in other countries. All other marks displayed on this document are the property of their respective owners. All Rights Reserved. Mapping Sources: Canadian Mapping Services canadamapping@cbre.com; DMTI Spatial, Environics Analytics, Microsoft Bing, Google Earth



Open Office Area



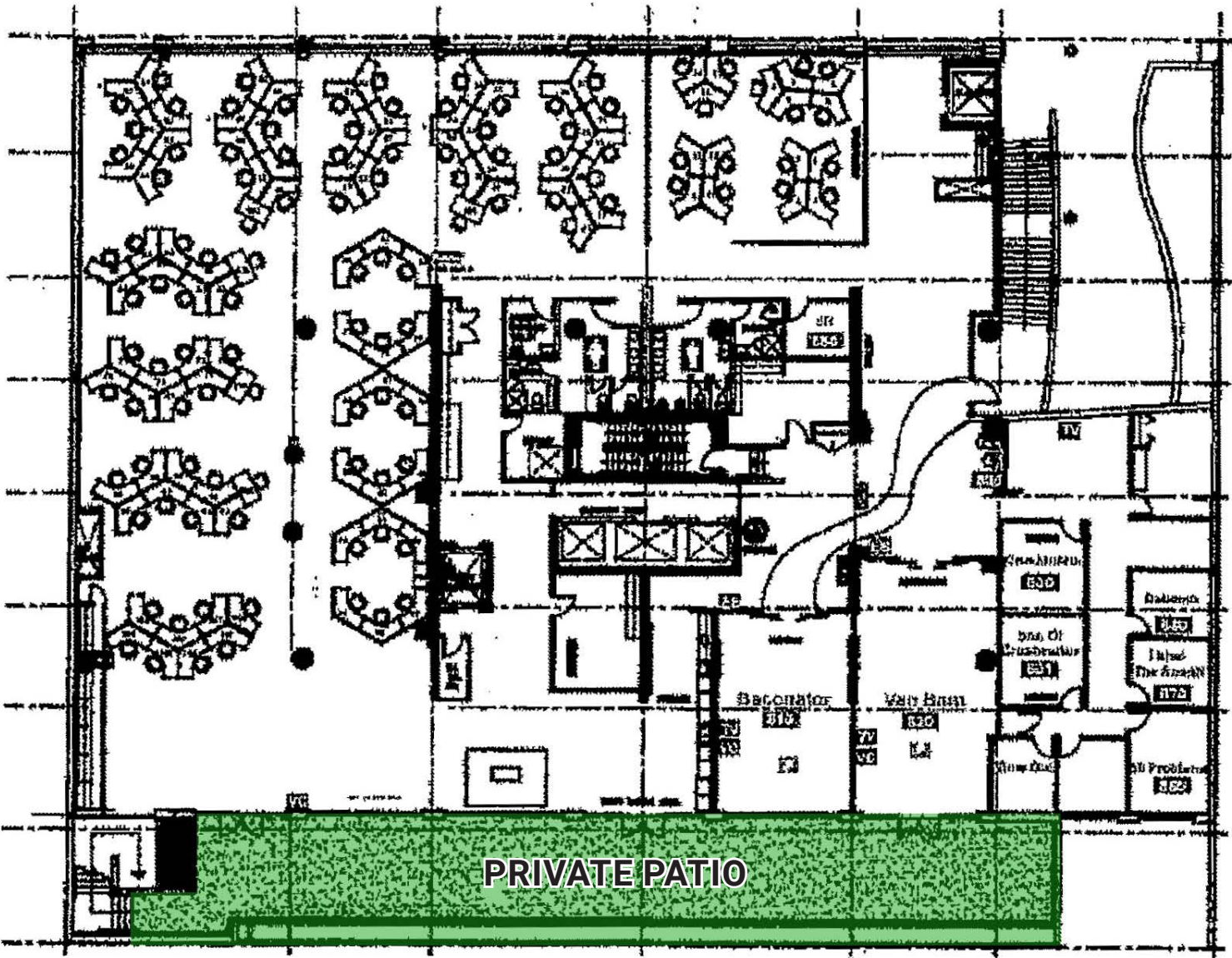
Boardroom



Large Kitchen



FLOOR PLAN



Open Office Area



Meeting Room



Private Outdoor Patio

THE LOCATION

1132 Alberni Street is located steps away from the vibrant corner of Alberni and Thurlow Street. The office is a quick 5-minute walk to Burrard Skytrain Station and a 8-minute walk to Vancouver City Centre Skytrain Station. The immediate neighbourhood is filled with countless restaurants, shops, and services for employees to enjoy.

NEIGHBOURHOOD AMENITIES

- Black+Blue
- Coast
- Damso Modern
- Earls Kitchen + Bar
- Joe Fortes Seafood & Chop House
- Pink Elephant Thai
- The Keg Steakhouse
- 49th Parallel Café
- A&W
- Blenz Coffee
- Freshii
- JJ Bean Coffee
- Thierry
- Tim Hortons
- Equinox
- London Drugs
- Urban Fare

WALK SCORE



97

WALKER'S
PARADISE



76

VERY
BIKEABLE



100

RIDER'S
PARADISE

walkscore.com



1132 ALBERNI STREET

CONTACT ME

Blair Quinn

Vice Chairman, The HTFG

Personal Real Estate Corporation

+1 604-662-5161 | blair.quinn@cbre.com

HT
FG

THE HIGH
TECHNOLOGY
FACILITIES GROUP

CBRE