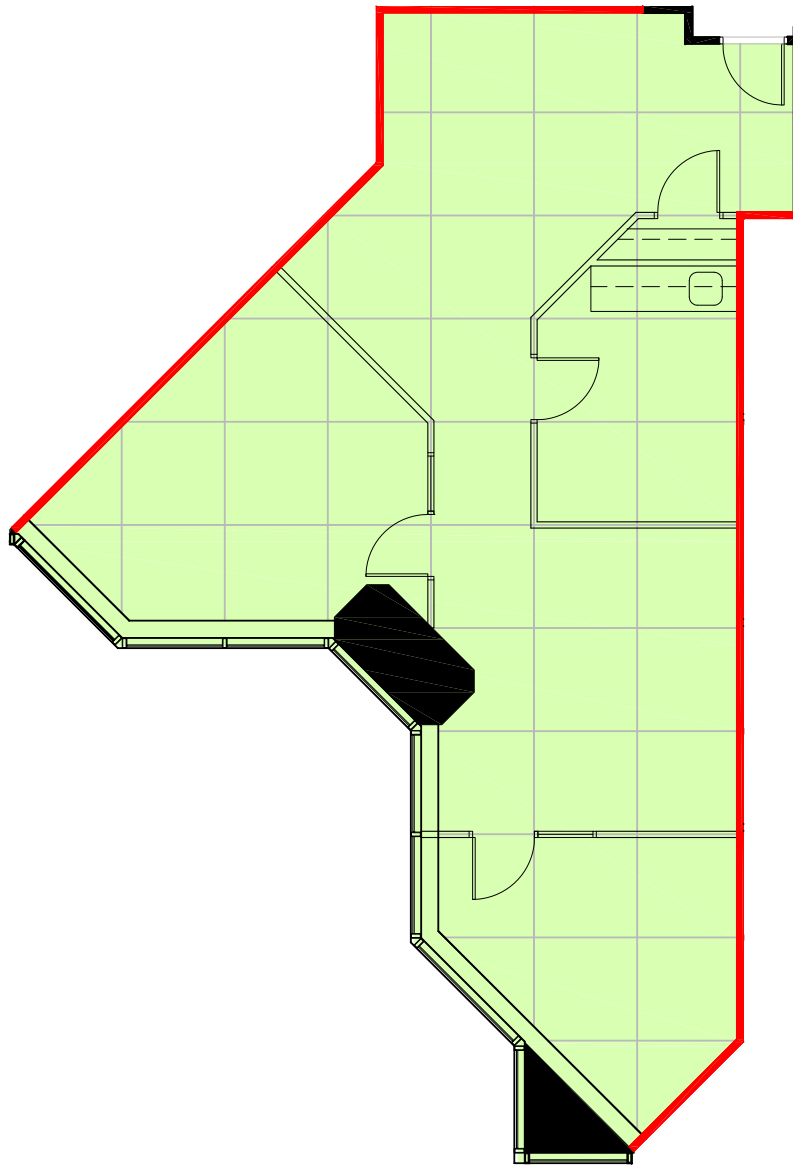


KEY PLAN



5 X 5 FT GRID SHOWN
DEMISING WALL



SUITE 1950

RENTABLE AREA = 1,414 SF

ABOVE INFORMATION ESTABLISHED ACCORDING
TO BOMA / ANSI Z65.1 1996
INTERIOR LAYOUT WAS PROVIDED BY PROPERTY MANAGEMENT

May 10, 2013

© 2013 Space Database Inc. All Rights Reserved



MANULIFE PLACE

Manulife Place
10180-101 Street, Edmonton, AB
19th Floor - Vacancies

