



## BUILDING FEATURES

**Available Space:** Unit #101, 1,924 SF

**Availability:** Immediate

**Net Rent:** Negotiable

**Additional Rent:** \$21.17 (approx.)

**Parking:** 2.5/1,000 sf

**Notes:** Great location  
Easy access to the Queensway  
Lots of amenities – Carlingwood Shopping Centre close by

Contact information:

**Ryan Barresi**  
Vice President, Commercial Sales & Leasing  
+ 613 780 1578  
rbarresi@cwottawa.com

**Neil Mason**  
Sales Representative  
+ 613 780 1571  
nmason@cwottawa.com

55 Metcalfe Street, Suite 400  
Ottawa, ON K1P 6L5  
cwottawa.com



**CUSHMAN &  
WAKEFIELD**

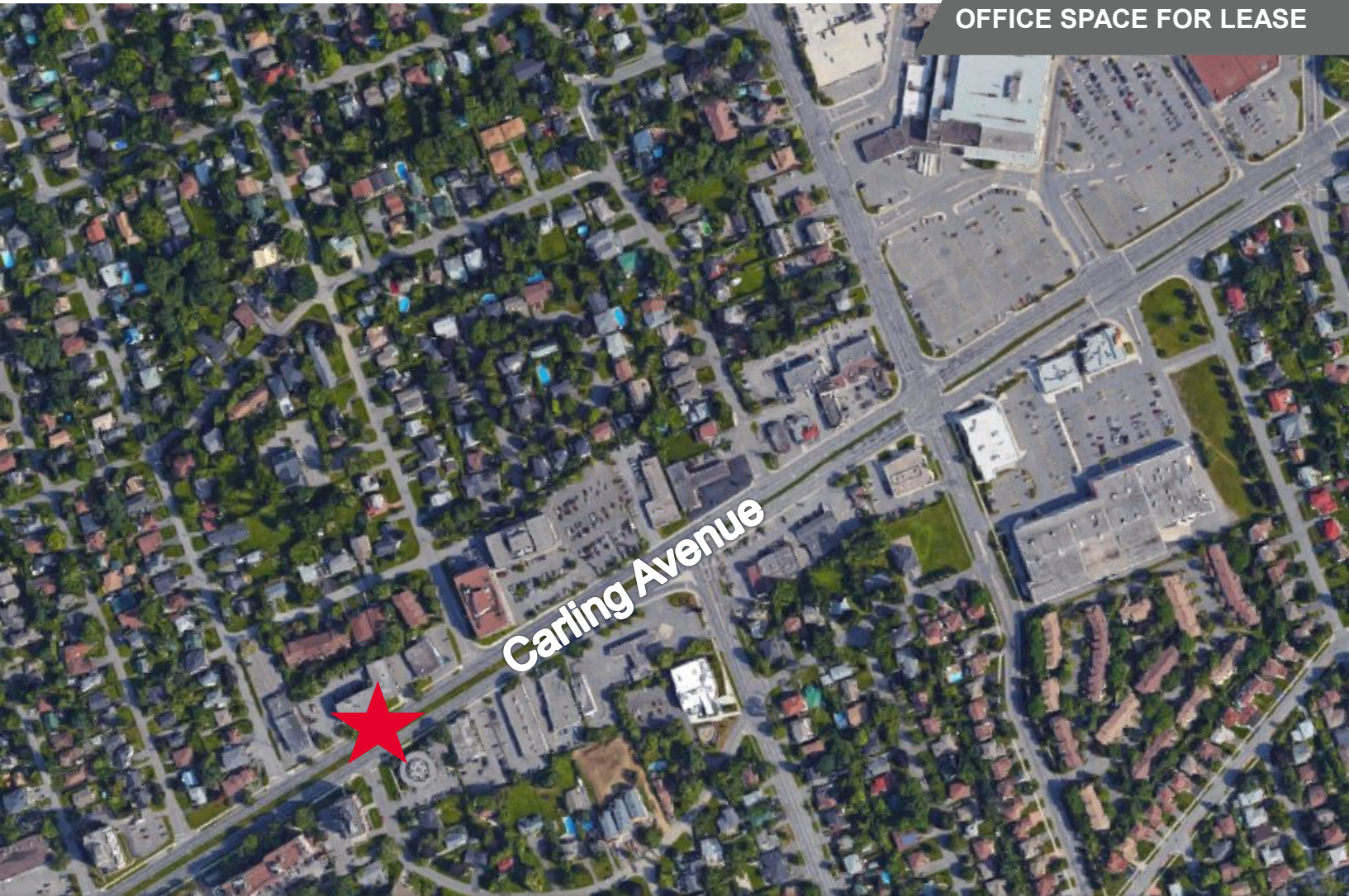
Ottawa

**FOR LEASE**

**2301 Carling Avenue, Suite 101**

Ottawa, ON

**OFFICE SPACE FOR LEASE**



## LOCATION

- West side of Carling Ave, west of Woodroffe in the neighbourhood of Carlingwood. Great Queensway access, 15 minutes from the downtown core and 15 minutes from Kanata. Very good central location
- Highly visible to automobile traffic along one of Ottawa's major transportation arteries, Carling Avenue
- The building is well located in terms of amenities as well, minutes from Carlingwood Shopping Centre

Contact information:

**Ryan Barresi**  
Vice President, Commercial Sales & Leasing  
+ 613 780 1578  
rbarresi@cwottawa.com

**Neil Mason**  
Sales Representative  
+ 613 780 1571  
nmason@cwottawa.com

55 Metcalfe Street, Suite 400  
Ottawa, ON K1P 6L5  
cwottawa.com

*Brokerage, Independently Owned & Operated / A Member of the Cushman and Wakefield Alliance*

Cushman & Wakefield Copyright 2019. No warranty or representation, express or implied, is made to the accuracy or completeness of the information contained herein, and same is submitted subject to errors, omissions, change of price, rental or other conditions, withdrawal without notice, and to any special listing conditions imposed by the property owner(s). As applicable, we make no representation as to the condition of the property (or properties) in question.