

FOR LEASE

FORMER CIBC

10431 - 82 AVENUE, EDMONTON, AB

RETAIL

PROPERTY HIGHLIGHTS

- + 3,644 sq. ft. available with potential build-to-suit opportunity on neighbouring lot in the historic Whyte Avenue district
- + Positioned along the main shopping strip just one block from Calgary Trail
- + Located next to the new Raymond Block retail/office development and The Black Dog Freehouse, and directly across from the Metterra Hotel



FOR LEASE

FORMER CIBC

10431 - 82 AVENUE, EDMONTON, AB

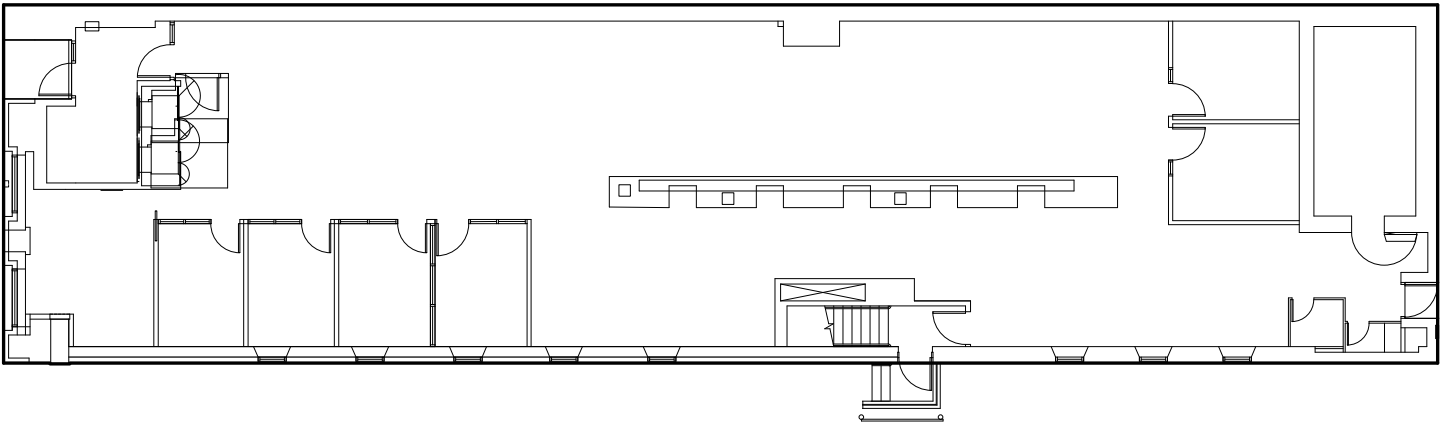
RETAIL

Property Details

Legal Address	Lots 29-30; Block 62; Plan I
Municipal Address	10431 - 82 Avenue
Site Area	±8,705 sq. ft.
Floor Area	±3,664 sq. ft.
Zoning	DC1 (Direct Development Control Provision)
Lease Rate	Market
Op Costs	TBD
Parking	± 11 Stalls (along west side of building)



FLOOR PLAN



CONTACT US

James Young

Associate Vice President
+1 780 917 4643
james.young@cbre.com

Daniel Yarmon

Associate
+1 780 229 4650
daniel.yarmon@cbre.com

This disclaimer shall apply to CBRE Limited, Real Estate Brokerage, and to all other divisions of the Corporation; to include all employees and independent contractors ("CBRE"). The information set out herein, including, without limitation, any projections, images, opinions, assumptions and estimates obtained from third parties (the "Information") has not been verified by CBRE, and CBRE does not represent, warrant or guarantee the accuracy, correctness and completeness of the Information. CBRE does not accept or assume any responsibility or liability, direct or consequential, for the Information or the recipient's reliance upon the Information. The recipient of the Information should take such steps as the recipient may deem necessary to verify the Information prior to placing any reliance upon the Information. The Information may change and any property described in the Information may be withdrawn from the market at any time without notice or obligation to the recipient from CBRE. CBRE and the CBRE logo are the service marks of CBRE Limited and/or its affiliated or related companies in other countries. All other marks displayed on this document are the property of their respective owners. All Rights Reserved.