



11404 Winterburn Rd Edmonton, Alberta



Property Features:

- 3,890 sq. ft. of second floor office space
- Perimeter offices, kitchen area, boardroom, reception and private washrooms
- Located in the Winterburn Industrial Park
- Quick access to Highway 16 and Anthony Henday Drive
- Available Immediately
- Owned and managed by Dream Industrial Management Corp.

Chad Griffiths

780 436 7410
cgriffiths@naiedmonton.com

Ryan Brown

780 436 7410
rbrown@naiedmonton.com

Darcie Bouteiller

780 436 7410
darcie@naiedmonton.com

THE INFORMATION CONTAINED HEREIN IS BELIEVED TO BE CORRECT, BUT IS NOT WARRANTED TO BE SO AND DOES NOT FORM A PART OF ANY FUTURE CONTRACT. THIS OFFERING IS SUBJECT TO CHANGE OR WITHDRAWAL WITHOUT NOTICE.

4601 99 Street NW
Edmonton, AB T6E 4Y1
+1 780 436 7410
naiedmonton.com

For Lease
Office Space

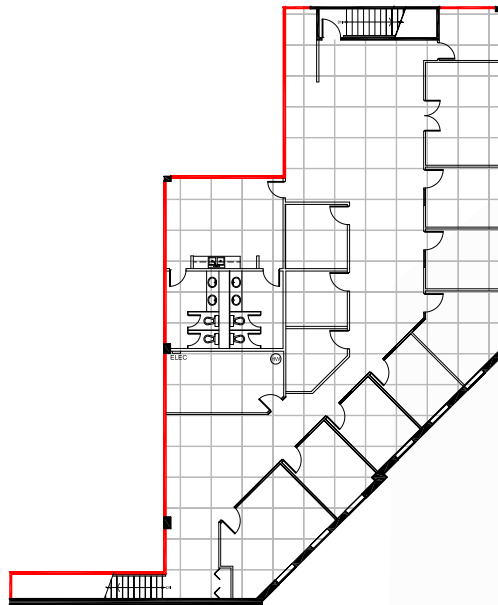


11404 Winterburn Rd

Edmonton, Alberta

Additional Information:

SIZE	3,890 sq. ft.
ZONING	IB (Business Industrial)
AVAILABILITY	Immediate
BASIC RENT	\$9.00/sq.ft./annum
OPERATING COSTS	\$6.56/sq.ft. (2017 estimate) Includes Tenant's proportionate cost of property taxes, building insurance, snow removal, landscape maintenance, and management fees.



Chad Griffiths

780 436 7410
cgriffiths@naiedmonton.com

Ryan Brown

780 436 7410
rbrown@naiedmonton.com

Darcie Bouteiller

780 436 7410
darcie@naiedmonton.com

6393-A CG RB17



4601 99 Street NW
Edmonton, AB T6E 4Y1
+1 780 436 7410
naiedmonton.com

NAI Commercial Real Estate Inc.