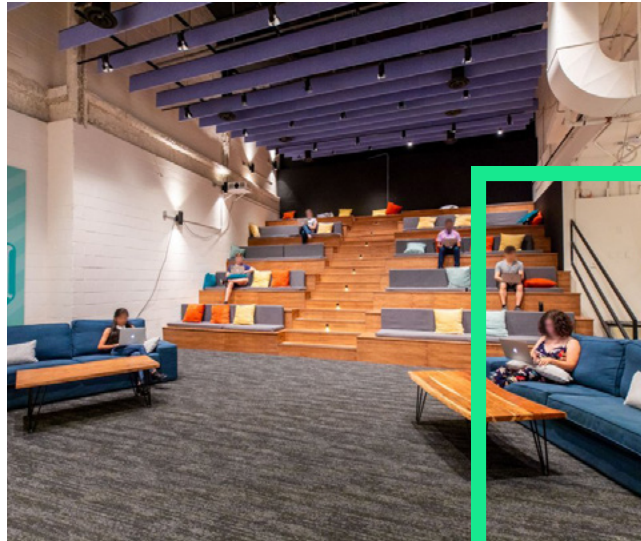


Mackenzie Sharpe*
Senior Vice President
+1 416 815 2382
mackenzie.sharpe@cbre.com

*Broker

FOR SUBLEASE





Details

Size: **Option 1:**
West + Great Hall
14,967 sq. ft.

Option 2:
South
9,261 sq. ft.

Option 3:
Entire Premises
24,228 sq. ft.

Available: Immediately

Term: June 30th, 2029

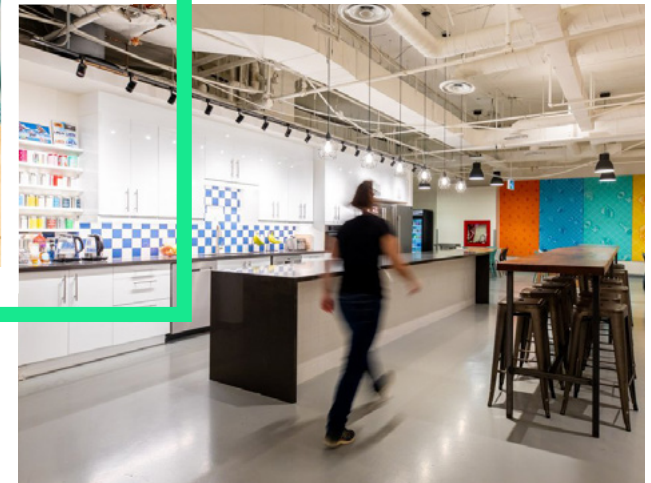
Net Rent: Please call listing agent to discuss

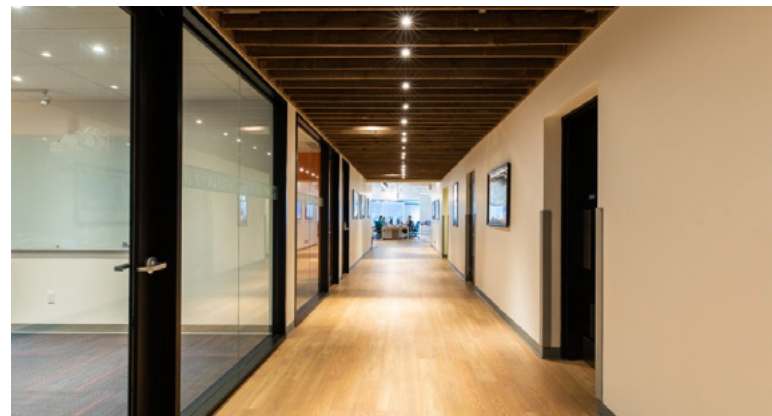
Additional Rent: \$19.23 per sq. ft.
(2022 estimate)



Features

- Exposed ceiling, one of a kind space with three options of sizes to choose from
- Auditorium with stadium seating
- Full kitchen for catered meals and multiple seating areas
- Tenant games area/lounge
- Multiple meeting rooms, board room and open collaboration areas
- Furniture available – negotiable
- Podium Signage for entire premises sublease
- Flexibility on demising options

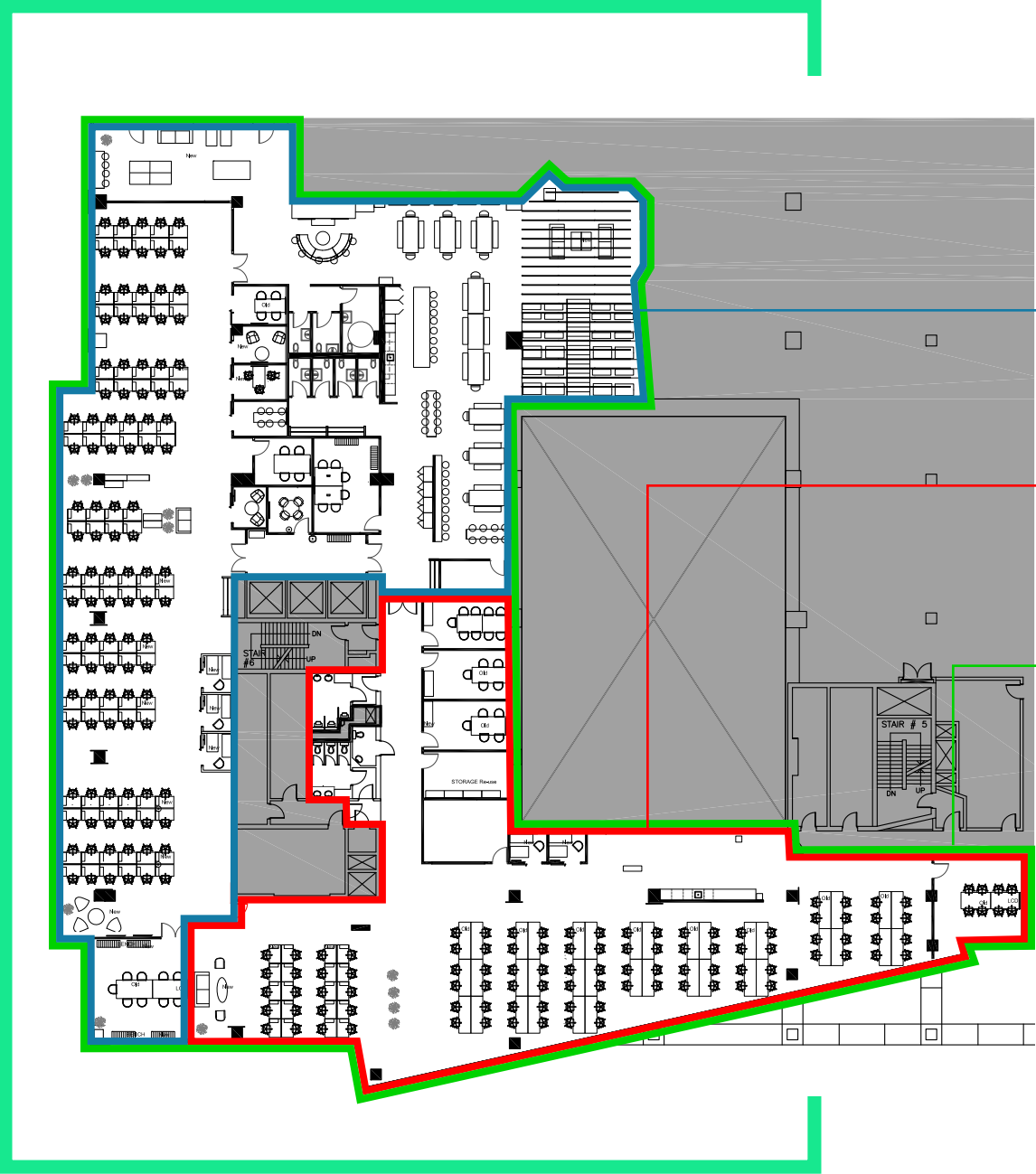








Floorplan



Option 1
West + Great Hall
Size: 14,967 sq. ft.

Option 2
South
Size: 9,261 sq. ft.

Option 3
Entire Premises
Size: 24,228 sq. ft.

The CBRE logo is displayed in a bold, dark green, sans-serif font.The address '15 John Street' is presented in a stylized, outlined font. The numbers '15' are significantly larger than the words 'John Street'. The text is contained within a large, thin green rectangular frame.

Mackenzie Sharpe*
Senior Vice President
+1 416 815 2382
mackenzie.sharpe@cbre.com

*Broker

CBRE LIMITED, REAL ESTATE BROKERAGE | 145 KING STREET WEST, SUITE 1100 | TORONTO, ON M5H 1J8 | +1 416 362 2244 | WWW.CBRE.CA

This disclaimer shall apply to CBRE Limited, Real Estate Brokerage, and to all other divisions of the Corporation; to include all employees and independent contractors ("CBRE"). The information set out herein, including, without limitation, any projections, images, opinions, assumptions and estimates obtained from third parties (the "Information") has not been verified by CBRE, and CBRE does not represent, warrant or guarantee the accuracy, correctness and completeness of the Information. CBRE does not accept or assume any responsibility or liability, direct or consequential, for the Information or the recipient's reliance upon the Information. The recipient of the Information should take such steps as the recipient may deem necessary to verify the Information prior to placing any reliance upon the Information. The Information may change and any property described in the Information may be withdrawn from the market at any time without notice or obligation to the recipient from CBRE. CBRE and the CBRE logo are the service marks of CBRE Limited and/or its affiliated or related companies in other countries. All other marks displayed on this document are the property of their respective owners. All Rights Reserved.