



FOR LEASE

1042 ALBERT STREET

REGINA, SK

Available Area: 1,200 SF

Possession: Negotiable

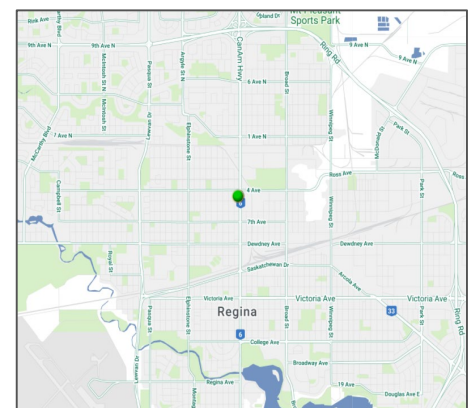
Lease Rate: \$2,011 + GST/Month

Utilities: Included



PROPERTY HIGHLIGHTS

Main floor office/retail opportunity. The current space includes a large reception/meeting space, smaller office area, private washroom and kitchenette/breakroom. The 1,200 SF suite has a bright, clean design with ample natural light, contemporary finishes, and vinyl plank flooring. The kitchenette is well equipped with all necessary appliances including a full-size oven, refrigerator, and microwave.



WALKER MOULDING

Senior Sales Associate

+1 306 525 2273

walker.moulding@cbre.com

CBRE

FOR LEASE

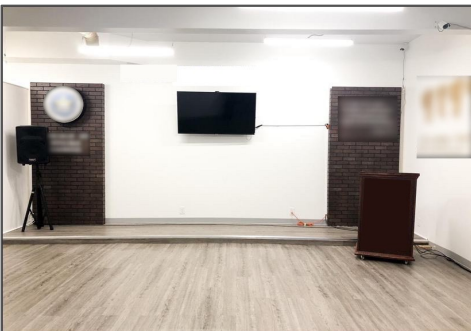
1042 ALBERT STREET

REGINA, SK

RETAIL



PROPERTY PHOTOGRAPHS



This disclaimer shall apply to CBRE Limited, Real Estate Brokerage, and to all other divisions of the Corporation; to include all employees and independent contractors ("CBRE"). The information set out herein, including, without limitation, any projections, images, opinions, assumptions and estimates obtained from third parties (the "Information") has not been verified by CBRE, and CBRE does not represent, warrant or guarantee the accuracy, correctness and completeness of the Information. CBRE does not accept or assume any responsibility or liability, direct or consequential, for the Information or the recipient's reliance upon the Information. The recipient of the Information should take such steps as the recipient may deem necessary to verify the Information prior to placing any reliance upon the Information. The Information may change and any property described in the Information may be withdrawn from the market at any time without notice or obligation to the recipient from CBRE. CBRE and the CBRE logo are the service marks of CBRE Limited and/or its affiliated or related companies in other countries. All other marks displayed on this document are the property of their respective owners. All Rights Reserved. This fact sheet is not intended to confirm an existing agency relationship between CBRE and ownership.

CBRE