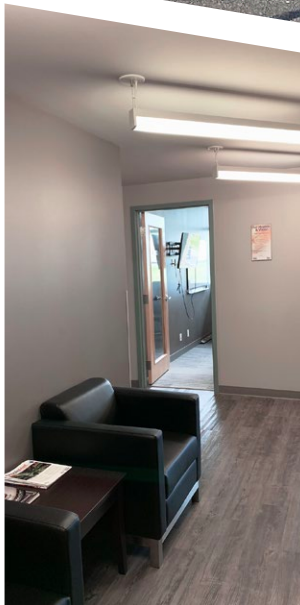
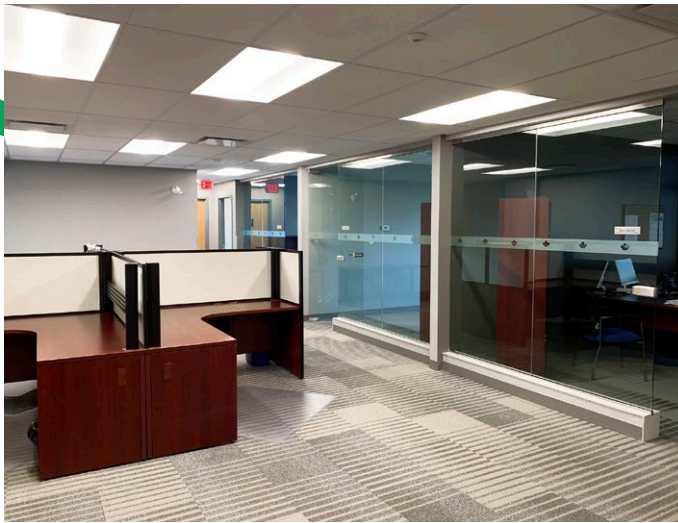
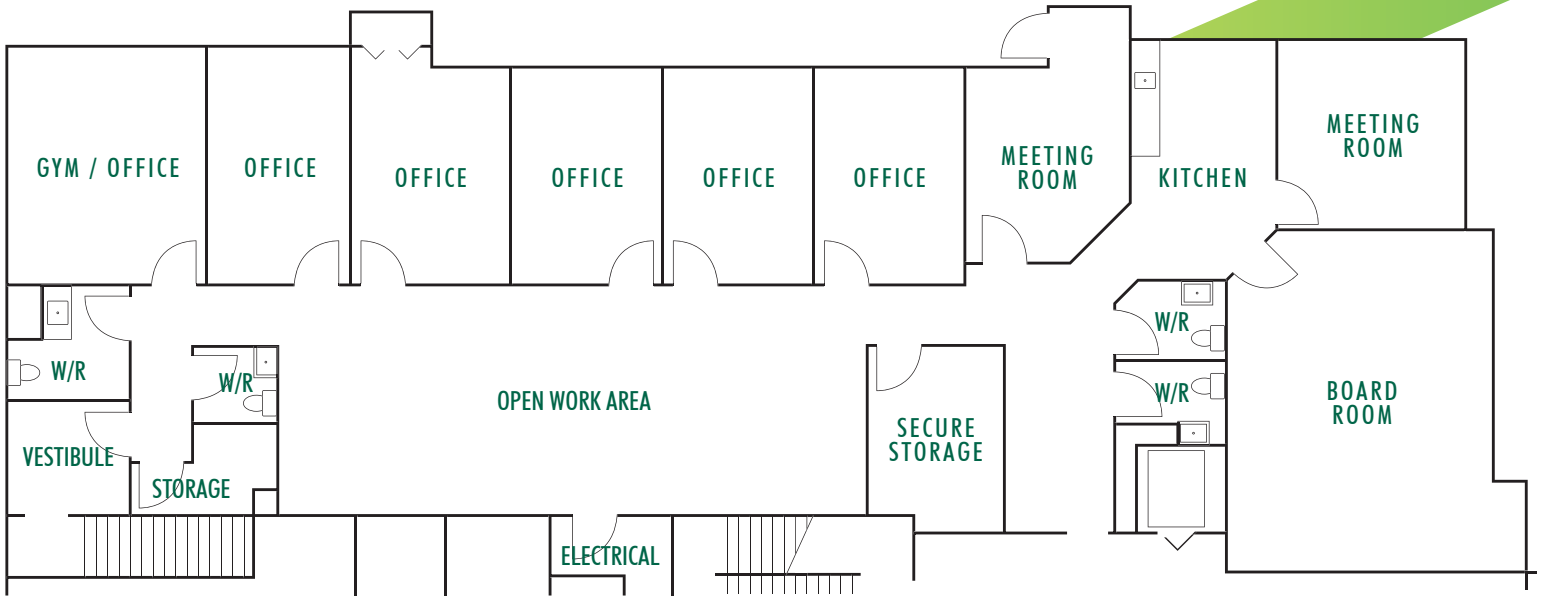


F O R S U B L E A S E

MAPLE REINDERS BUILDING

1921 - 91 Street SW / Edmonton, AB





SUBLEASE DETAILS

VACANCY:	3,745 SF
Unit:	102
NET RENTAL RATE:	Market
OPERATING COSTS:	\$14.65 + janitorial
FURNITURE:	Contact Listing Agent
SUBLEASE EXPIRY:	July 2026
AVAILABLE:	Immediately

FIND OUT MORE:

RYAN O'SHAUGHNESSY

Sales Representative

1 + 780 229 4686

ryan.oshaughnessy@cbre.com

ANDREA KLASSEN

Sales Representative

1 + 780 229 4688

andrea.klassen@cbre.com

JEFF SIMKIN

Senior Vice President

1 + 780 917 4633

jeff.simkin@cbre.com

This disclaimer shall apply to CBRE Limited, Real Estate Brokerage, and to all other divisions of the Corporation; to include all employees and independent contractors ("CBRE"). All references to CBRE Limited herein shall be deemed to include CBRE, Inc. The information set out herein, including, without limitation, any projections, images, opinions, assumptions and estimates obtained from third parties (the "Information") has not been verified by CBRE, and CBRE does not represent, warrant or guarantee the accuracy, correctness and completeness of the Information. CBRE does not accept or assume any responsibility or liability, direct or consequential, for the Information or the recipient's reliance upon the Information. The recipient of the Information should take such steps as the recipient may deem necessary to verify the Information prior to placing any reliance upon the Information. The Information may change and any property described in the Information may be withdrawn from the market at any time without notice or obligation to the recipient from CBRE. CBRE and the CBRE logo are the service marks of CBRE Limited and/or its affiliated or related companies in other countries. All other marks displayed on this document are the property of their respective owners. All Rights Reserved.