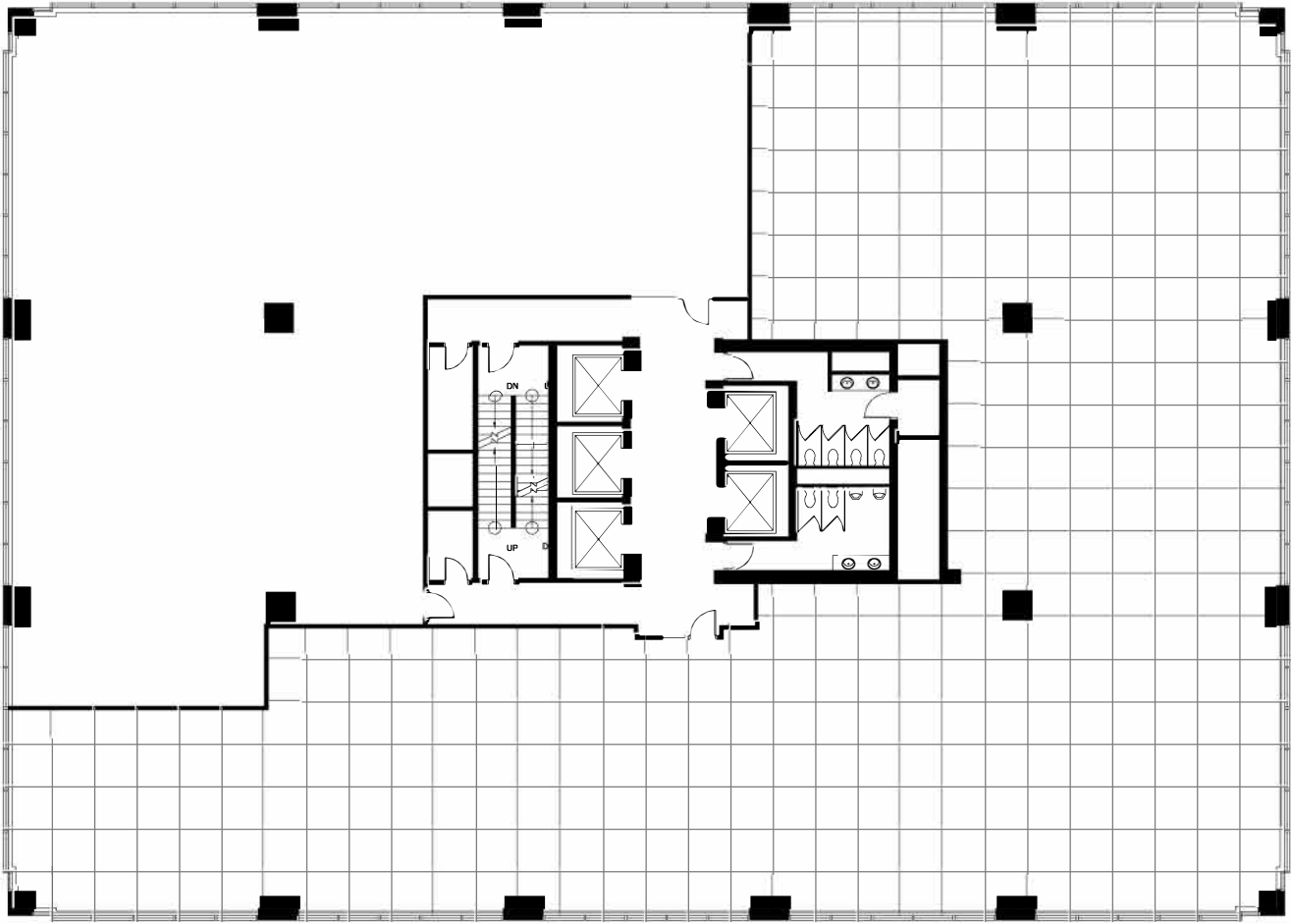
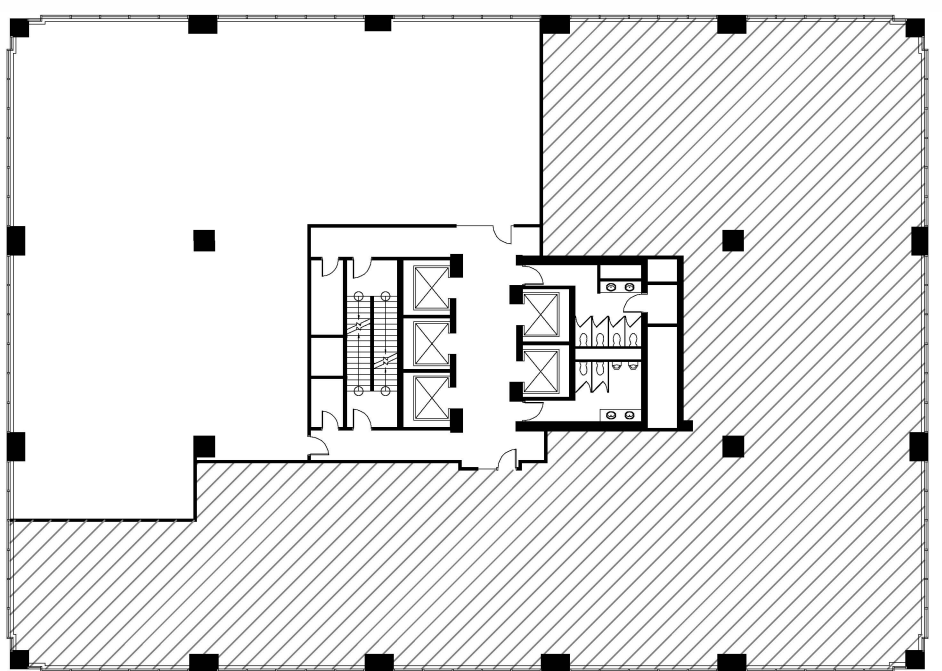


5th & 5th

605 - 5th AVE. SW, CALGARY, AB



NOTE: THIS FLOOR PLAN IS NOT TO SCALE AND IS INTENDED FOR CONCEPTUAL PURPOSE ONLY. GRID REPRESENTS 5' X 5' AREA. PDW DESIGN INC.



Suite 2520

4,462 ft²

