

FOR LEASE: BRAND NEW RETAIL UNITS

KINGS CROSSING

7350 EDMONDS STREET

BURNABY, BRITISH COLUMBIA



CONTACT US

Adrian Beruschi
Personal Real Estate Corporation
Senior Vice President
+1 604 662 5138
adrian.beruschi@cbre.com

Mario Negris
Personal Real Estate Corporation
Executive Vice President
+1 604 662 3000
mario.negris@cbre.com

Matt Wasylynko
Sales Representative
+1 604 662 5192
matt.wasylynko@cbre.com



FOR LEASE

BRAND NEW RETAIL UNITS

DEVELOPMENT OVERVIEW

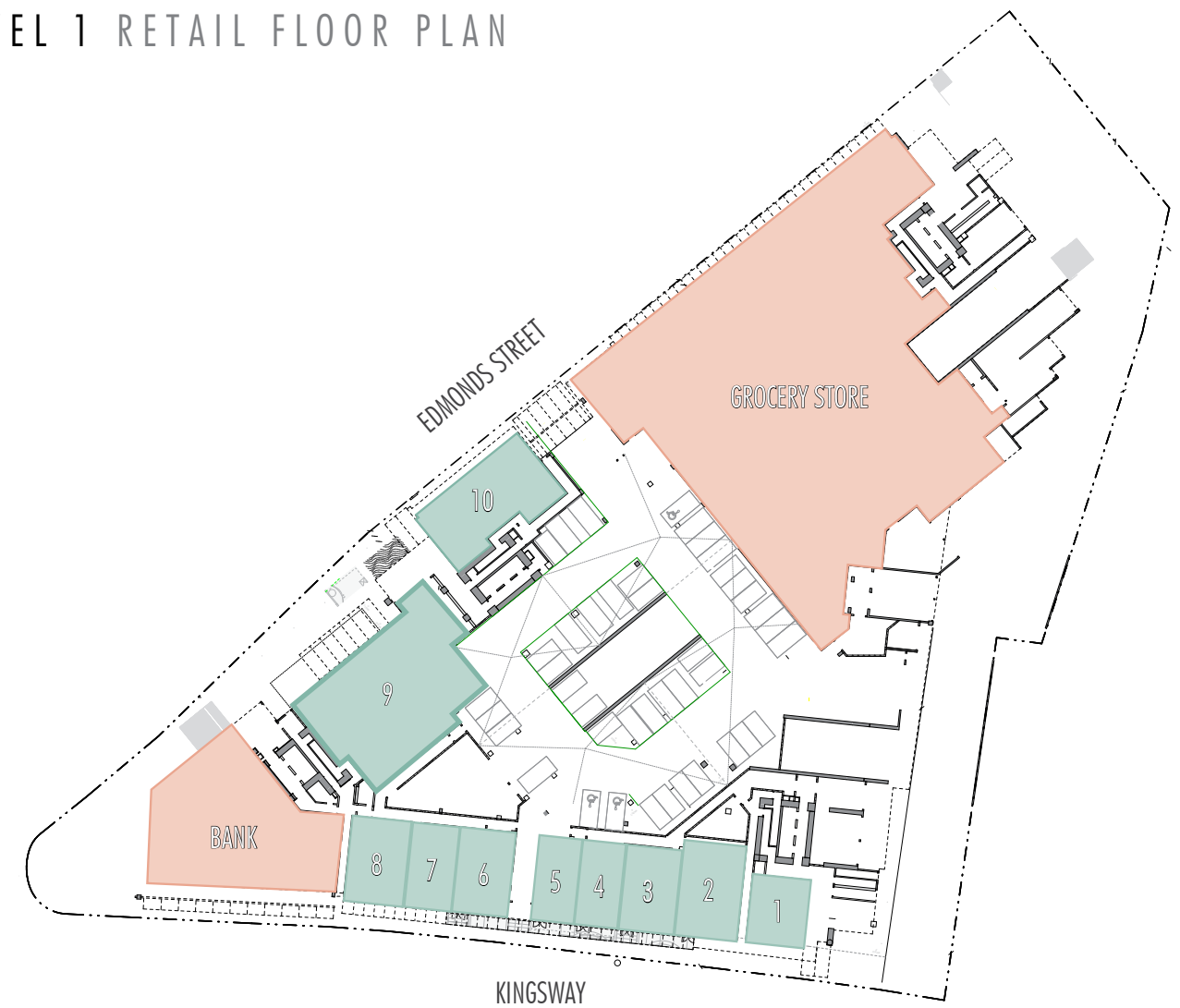
KINGS CROSSING is a master-planned community to be located in Burnaby's Edmonds Town Centre and constructed by CRESSEY. This mixed-use development combines a pavilion-inspired office tower, ± 100,000 sq. ft. of grocery-anchored retail and 3 residential towers with nearly 800 units. Estimated possession date is Q2 2019.

LOCATION OVERVIEW

KINGS CROSSING is located at the high-traffic intersection of Kingsway and Edmonds Street.

- High level transit connectivity location with direct links to Edmonds (6 minutes), Metrotown and New Westminister SkyTrain stations.
- Central location provides convenient vehicle access from all surrounding communities.
- Surrounding area provides an ample offering of desirable shops, services and restaurants along the Kingsway corridor and into New Westminister.
- Nearby public amenities include the Tommy Douglas Public Library and the newly completed Edmonds Community Centre featuring fitness and aquatic facilities.

LEVEL 1 RETAIL FLOOR PLAN



UNIT	SIZE	ASKING RATE	UNIT	SIZE	ASKING RATE
LEVEL 2 - FITNESS	31,310 SF	LEASED	CRU 5	883 SF	\$38.00 PSF
CRU 1A - GROCERY STORE	23,207 SF	LEASED	CRU 6 ²	1,132 SF	\$40.00 PSF
CRU 1D - BANK	4,998 SF	LEASED	CRU 7	939 SF	\$40.00 PSF
CRU 1	980 SF	\$38.00 PSF	CRU 8	1,195 SF	\$40.00 PSF
CRU 2 ¹	1,490 SF	\$38.00 PSF	CRU 9	4,638 SF	\$44.00 PSF
CRU 3	1,115 SF	\$38.00 PSF	CRU 10	2,234 SF	\$46.00 PSF
CRU 4	814 SF	\$38.00 PSF	CRU 11 ³	5,334 SF	\$30.00 PSF

ADDITIONAL RENT

\$14.00 per sq. ft. (estimated)

KITCHEN VENTING

Units 9, 10, & 11

PARKING

2 : 1,000 sq. ft.

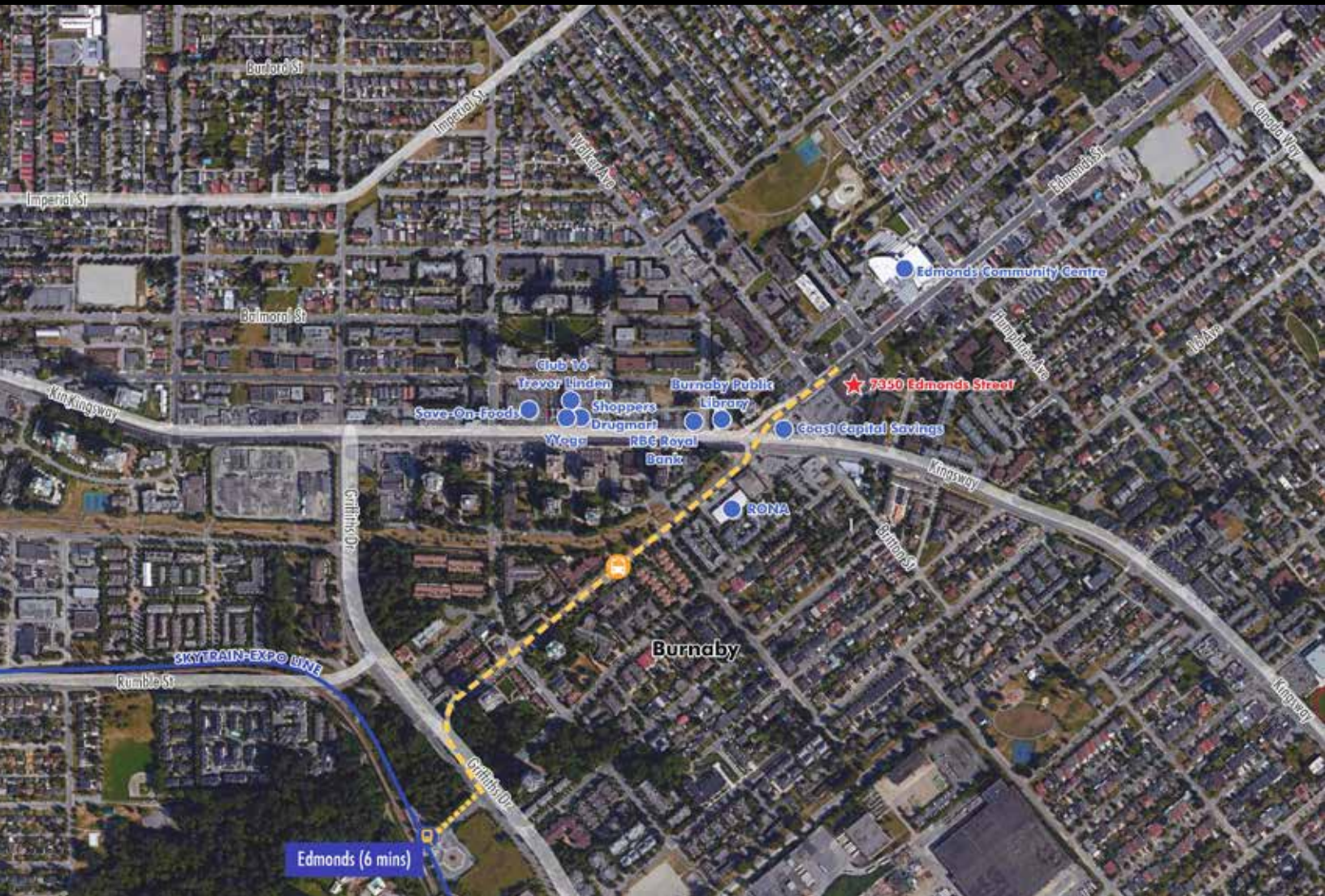
¹ Units 2, 3, 4, & 5 can be combined.

² Units 6, 7, & 8 can be combined.

³ Level 2 - floor plan available upon request.

FOR LEASE

7350 EDMONDS STREET BURNABY, BRITISH COLUMBIA



CONTACT US

Adrian Beruschi
Personal Real Estate Corporation
Senior Vice President
+1 604 662 5138
adrian.beruschi@cbre.com

Mario Negris
Personal Real Estate Corporation
Executive Vice President
+1 604 662 3000
mario.negris@cbre.com

Matt Wasylyenko
Sales Representative
+1 604 662 5192
matt.wasylyenko@cbre.com

CBRE Limited | 1021 West Hastings Street | #2500 | Vancouver, BC V6E 0C3 | www.cbre.ca

This disclaimer shall apply to CBRE Limited, Real Estate Brokerage, and to all other divisions of the Corporation, to include all employees and independent contractors ("CBRE"). The information set out herein, including, without limitation, any projections, images, opinions, assumptions and estimates obtained from third parties (the "Information") has not been verified by CBRE, and CBRE does not represent, warrant or guarantee the accuracy, correctness and completeness of the Information. CBRE does not accept or assume any responsibility or liability, direct or consequential, for the Information or the recipient's reliance upon the Information. The recipient of the Information should take such steps as the recipient may deem necessary to verify the Information prior to placing any reliance upon the Information. The Information may change and any property described in the Information may be withdrawn from the market at any time without notice or obligation to the recipient from CBRE. CBRE and the CBRE logo are the service marks of CBRE Limited and/or its affiliated or related companies in other countries. All other marks displayed on this document are the property of their respective owners. All Rights Reserved. Mapping Sources: Canadian Mapping Services canadamapping@cbre.com; DMTI Spatial, Environics Analytics, Microsoft Bing, Google Earth.

CBRE