

Available
NOVEMBER 2019

1,468 sq. ft. Office Space for Lease



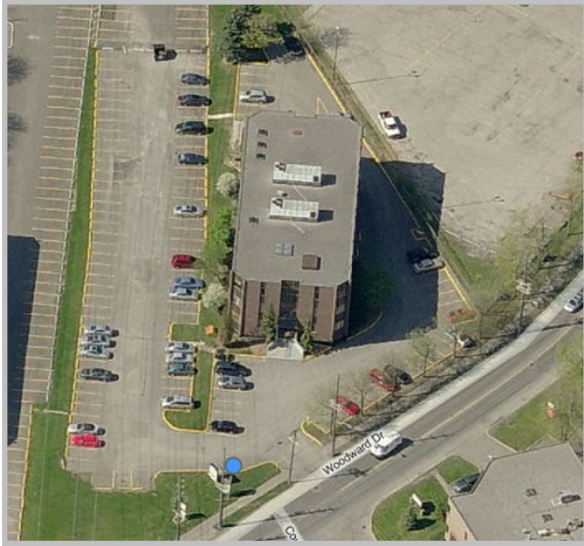
1701 Woodward Drive – Suite LL-18 & LL19

Property Features

- Ample on-site parking
- Visitor's parking area
- Elevator in building
- Handicap ramp at rear
- Easy access to Queensway from Maitland or Carling Avenues
- Large windows for natural lights

Suite Features

- LL-18 454 s.f.
- LL-19 1,014 s.f.
- Will customize to suit
- Reception
- Enclosed offices
- Boardroom
- Server / Storage room
- Pylon signage available



Floor Plan

