

POSTMEDIA

FOR LEASE

365 BLOOR STREET EAST

POSTMEDIAPLACE



WiredScore
GOLD

Greenrock **CBRE**

*Sales Representative **Broker

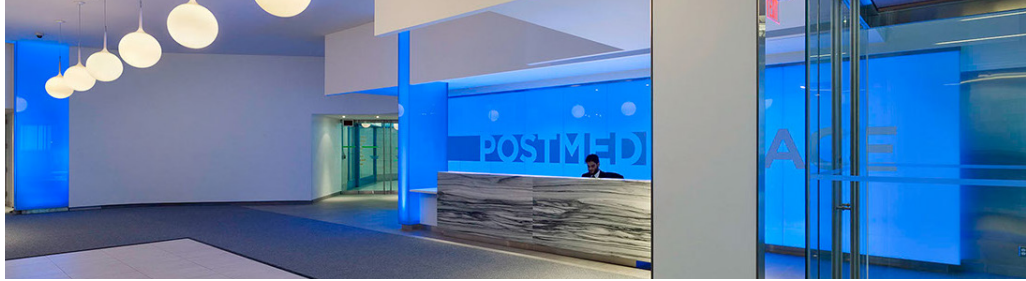
MYAH OLLEK
Sales Representative
+1 416 815 2353
myah.ollek@cbre.com

BRENDAN J. SULLIVAN*
Senior Vice President
+1 416 847 3262
brendan.sullivan@cbre.com

MACKENZIE SHARPE**
Senior Vice President
+1 416 815 2382
mackenzie.sharpe@cbre.com

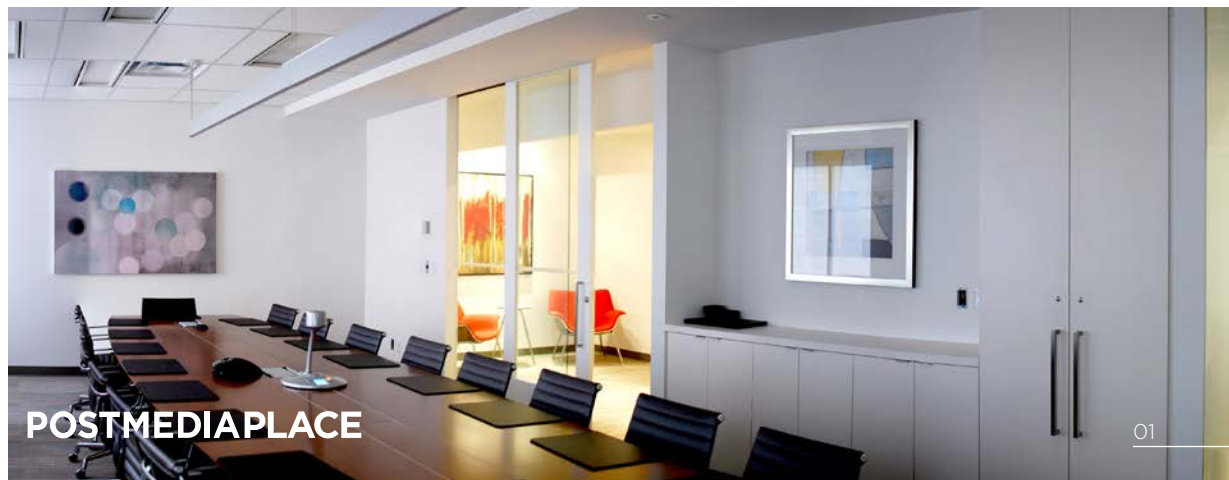
KATE CAMENZULI*
Vice President
+1 416 815 2380
kate.camenzuli@cbre.com

JESSICA BRILLINGER
Sales Representative
+1 416 815 2347
jessica.brillinger@cbre.com

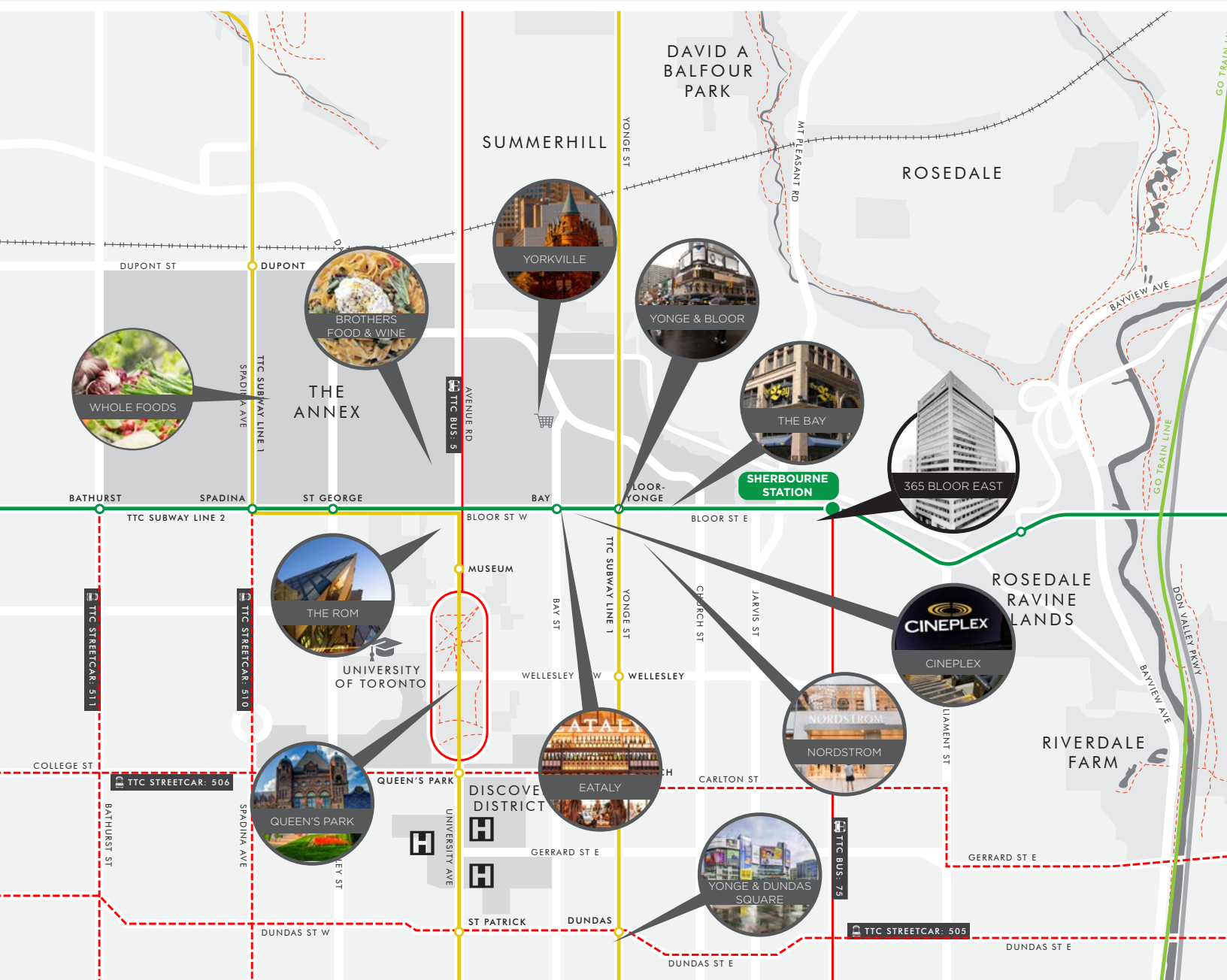


365 BLOOR STREET EAST

SUITES	SIZE	AVAILABLE
2000	4,246 sq. ft.	Immediate
1910	2,777 sq. ft. Contiguous with Suite 1902 for a total of 6,438 sq. ft.	Immediate
1902	3,661 sq. ft. Contiguous with Suite 1910 for a total of 6,438 sq. ft.	Immediate
1701	1,531 sq. ft.	Immediate
1500	16,564 sq. ft.	Immediate
1010	3,182 sq. ft.	Immediate
1004	1,745 sq. ft.	August 1, 2022
801	3,768 sq. ft.	Immediate
NET RENT:	Click here to contact listing agent	
ADDITIONAL RENT:	\$22.06 per sq. ft. (2022 Estimate)	

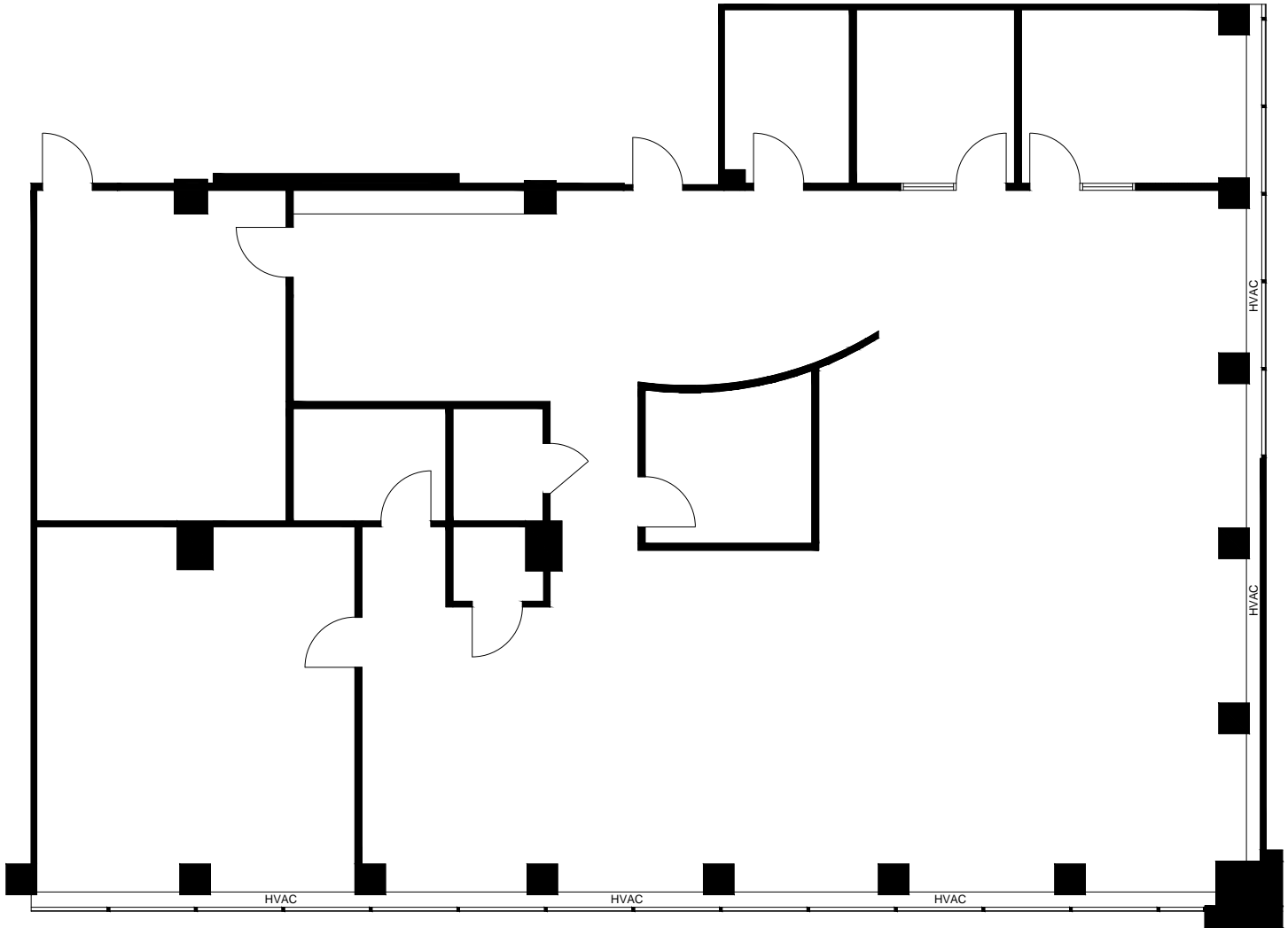


AMENITIES



20TH FLOOR

Suite: 2000 | Size: 4,246 sq. ft. | Available: Immediate



Greenrock **CBRE** POSTMEDIAPLACE

*Sales Representative **Broker

MYAH OLLEK
Sales Representative
+1 416 815 2353
myah.ollek@cbre.com

BRENDAN J. SULLIVAN*
Senior Vice President
+1 416 847 3262
brendan.sullivan@cbre.com

MACKENZIE SHARPE**
Senior Vice President
+1 416 815 2382
mackenzie.sharpe@cbre.com

KATE CAMENZULI*
Vice President
+1 416 815 2380
kate.camenzuli@cbre.com

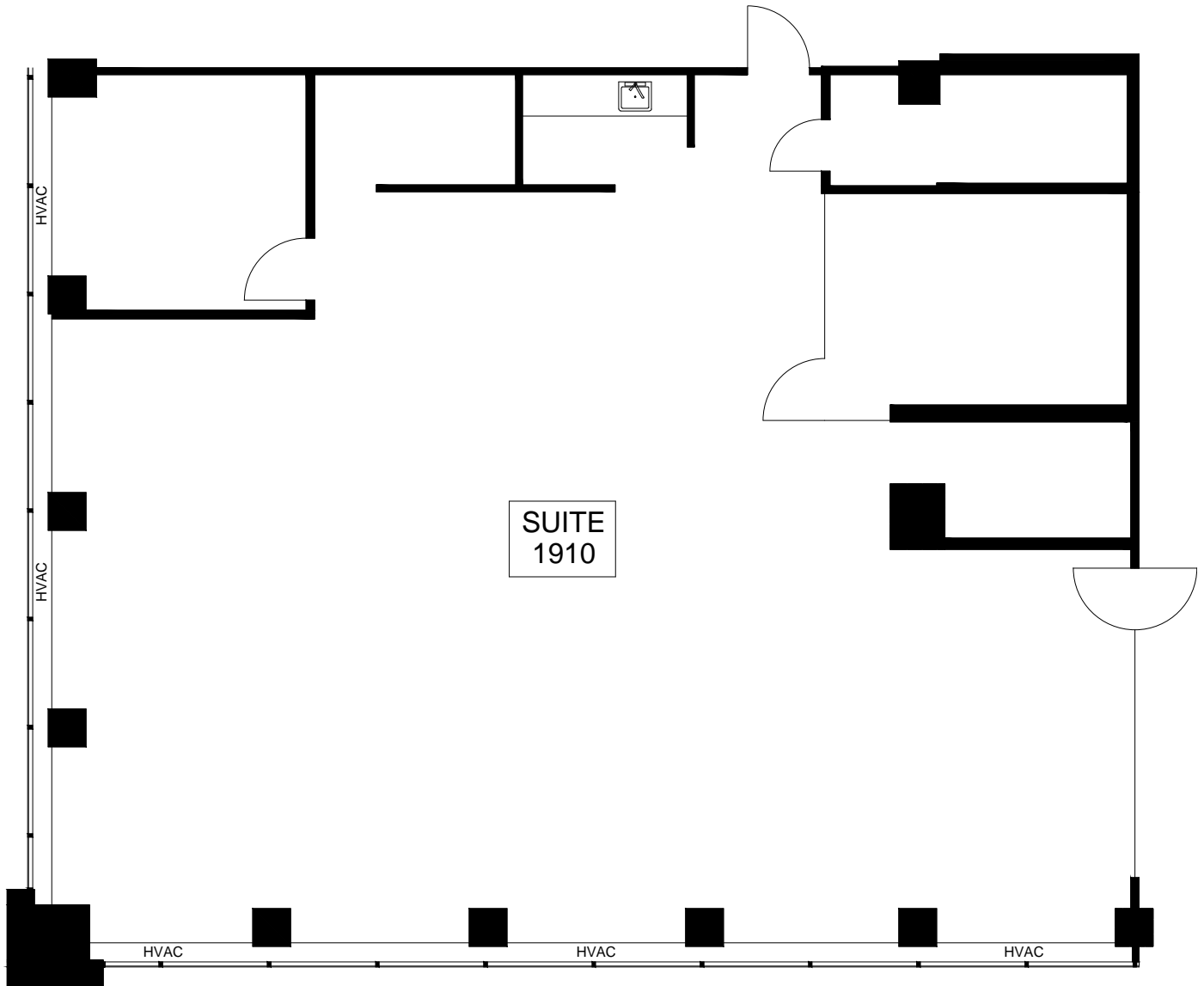
JESSICA BRILLINGER
Sales Representative
+1 416 815 2347
jessica.brillinger@cbre.com

19TH FLOOR



Suite: 1910 | 2,777 sq. ft. | Available: Immediate

*Contiguous with Suite 1902 for a total of 6,438 sq. ft.



Greenrock **CBRE** POSTMEDIAPLACE

*Sales Representative **Broker

MYAH OLLEK
Sales Representative
+1 416 815 2353
myah.ollek@cbre.com

BRENDAN J. SULLIVAN*
Senior Vice President
+1 416 847 3262
brendan.sullivan@cbre.com

MACKENZIE SHARPE**
Senior Vice President
+1 416 815 2382
mackenzie.sharpe@cbre.com

KATE CAMENZULI*
Vice President
+1 416 815 2380
kate.camenzuli@cbre.com

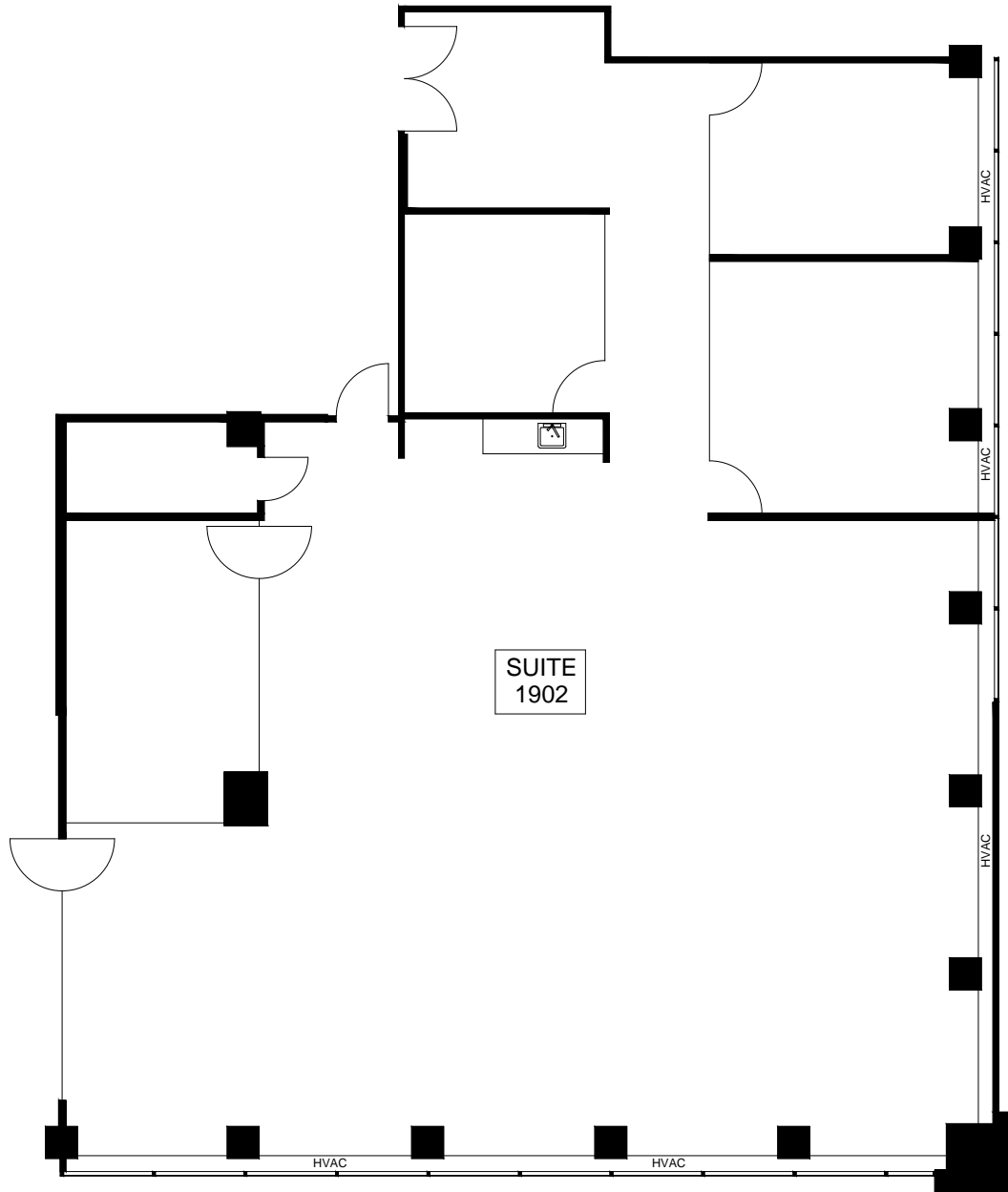
JESSICA BRILLINGER
Sales Representative
+1 416 815 2347
jessica.brillinger@cbre.com

19TH FLOOR



Suite: 1902 | 3,661 sq. ft. | Available: Immediate

*Contiguous with Suite 1910 for a total of 6,438 sq. ft.



Greenrock **CBRE** POSTMEDIAPLACE

*Sales Representative **Broker

MYAH OLLEK
Sales Representative
+1 416 815 2353
myah.ollek@cbre.com

BRENDAN J. SULLIVAN*
Senior Vice President
+1 416 847 3262
brendan.sullivan@cbre.com

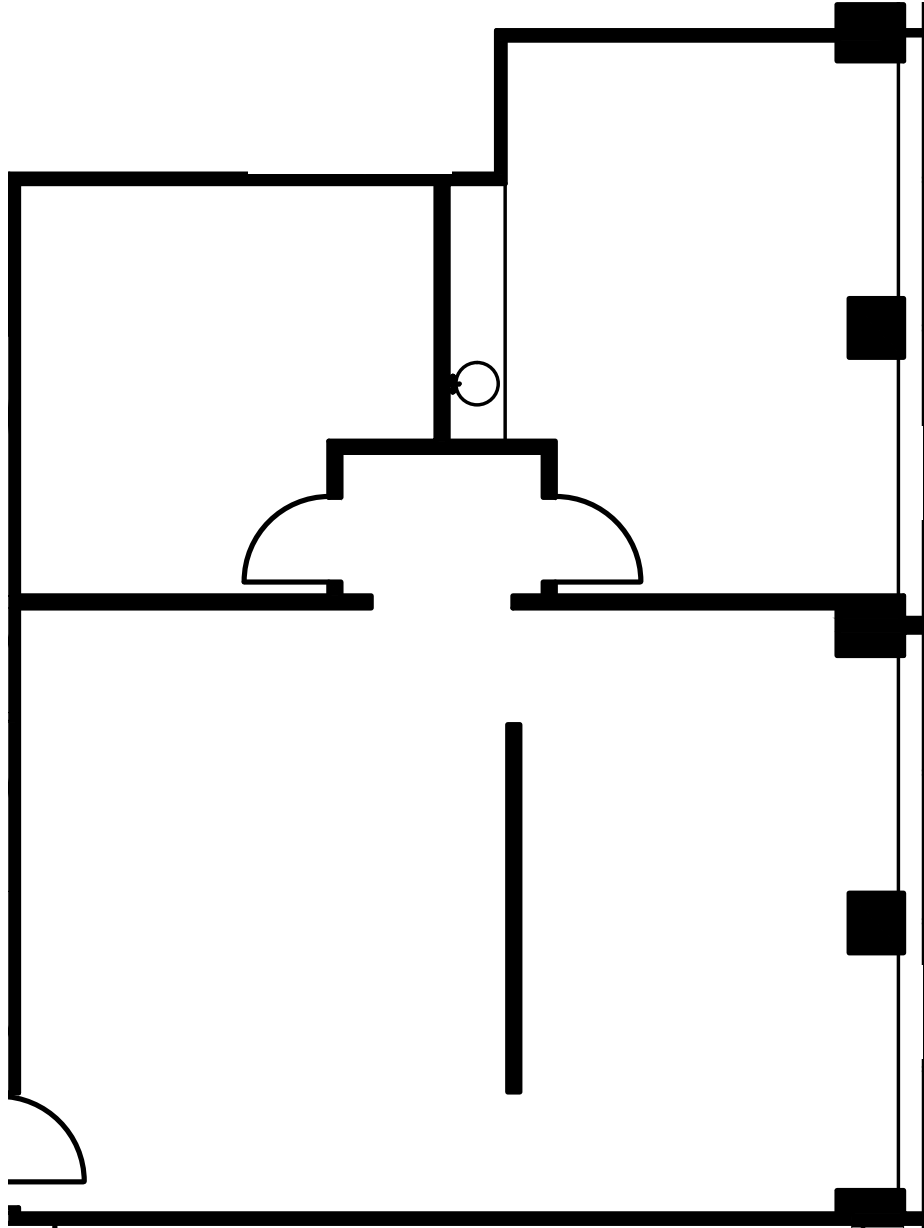
MACKENZIE SHARPE**
Senior Vice President
+1 416 815 2382
mackenzie.sharpe@cbre.com

KATE CAMENZULI*
Vice President
+1 416 815 2380
kate.camenzuli@cbre.com

JESSICA BRILLINGER
Sales Representative
+1 416 815 2347
jessica.brillinger@cbre.com

17TH FLOOR

Suite: 1701 | Size: 1,531 sq. ft. | Available: Immediate



Greenrock **CBRE** POSTMEDIAPLACE

*Sales Representative **Broker

MYAH OLLEK
Sales Representative
+1 416 815 2353
myah.ollek@cbre.com

BRENDAN J. SULLIVAN*
Senior Vice President
+1 416 847 3262
brendan.sullivan@cbre.com

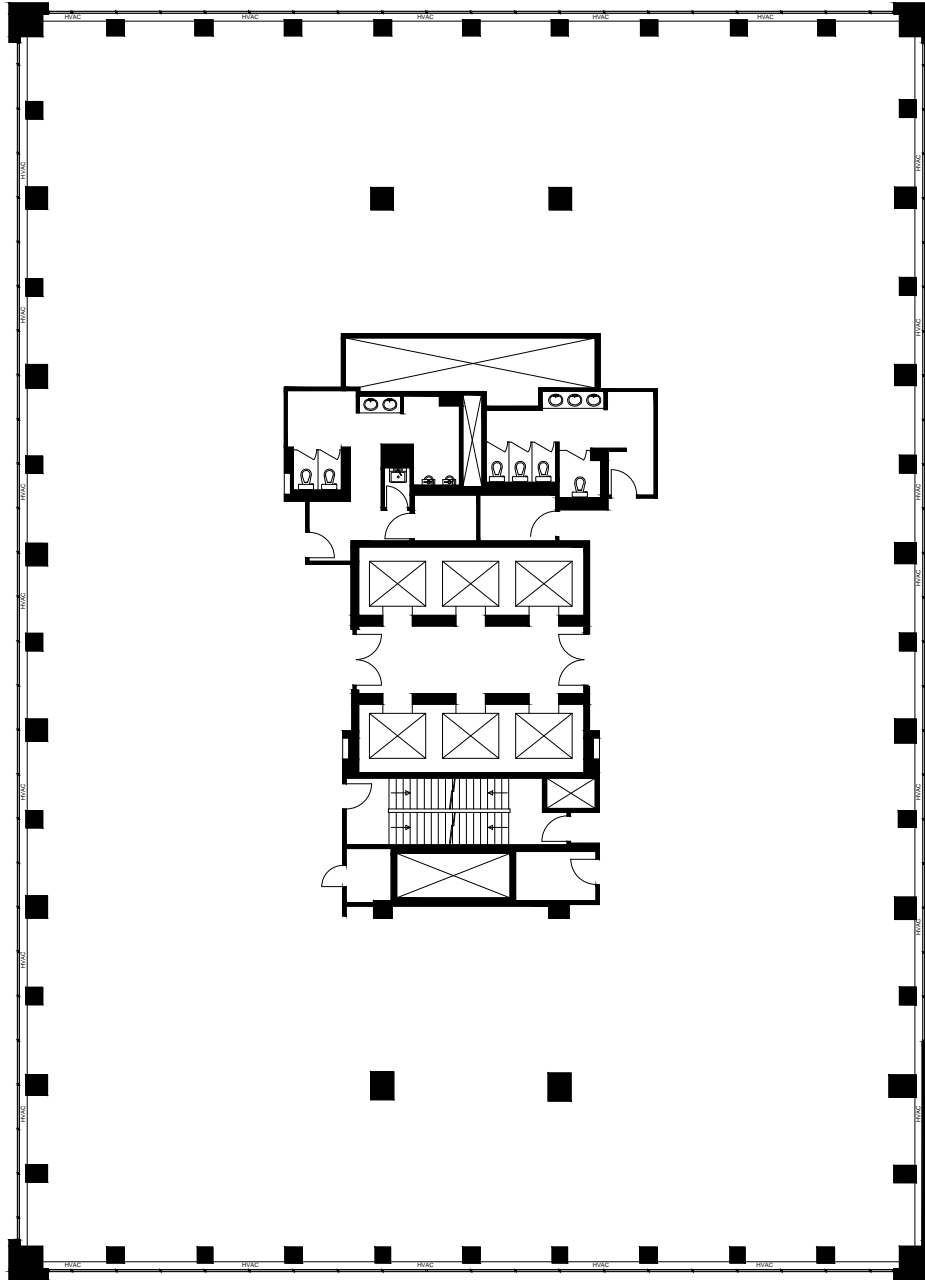
MACKENZIE SHARPE**
Senior Vice President
+1 416 815 2382
mackenzie.sharpe@cbre.com

KATE CAMENZULI*
Vice President
+1 416 815 2380
kate.camenzuli@cbre.com

JESSICA BRILLINGER
Sales Representative
+1 416 815 2347
jessica.brillinger@cbre.com

15TH FLOOR

Suite: 1500 | Size: 16,564 sq. ft. | Available: Immediate



Greenrock **CBRE** POSTMEDIAPLACE

*Sales Representative **Broker

MYAH OLLEK
Sales Representative
+1 416 815 2353
myah.ollek@cbre.com

BRENDAN J. SULLIVAN*
Senior Vice President
+1 416 847 3262
brendan.sullivan@cbre.com

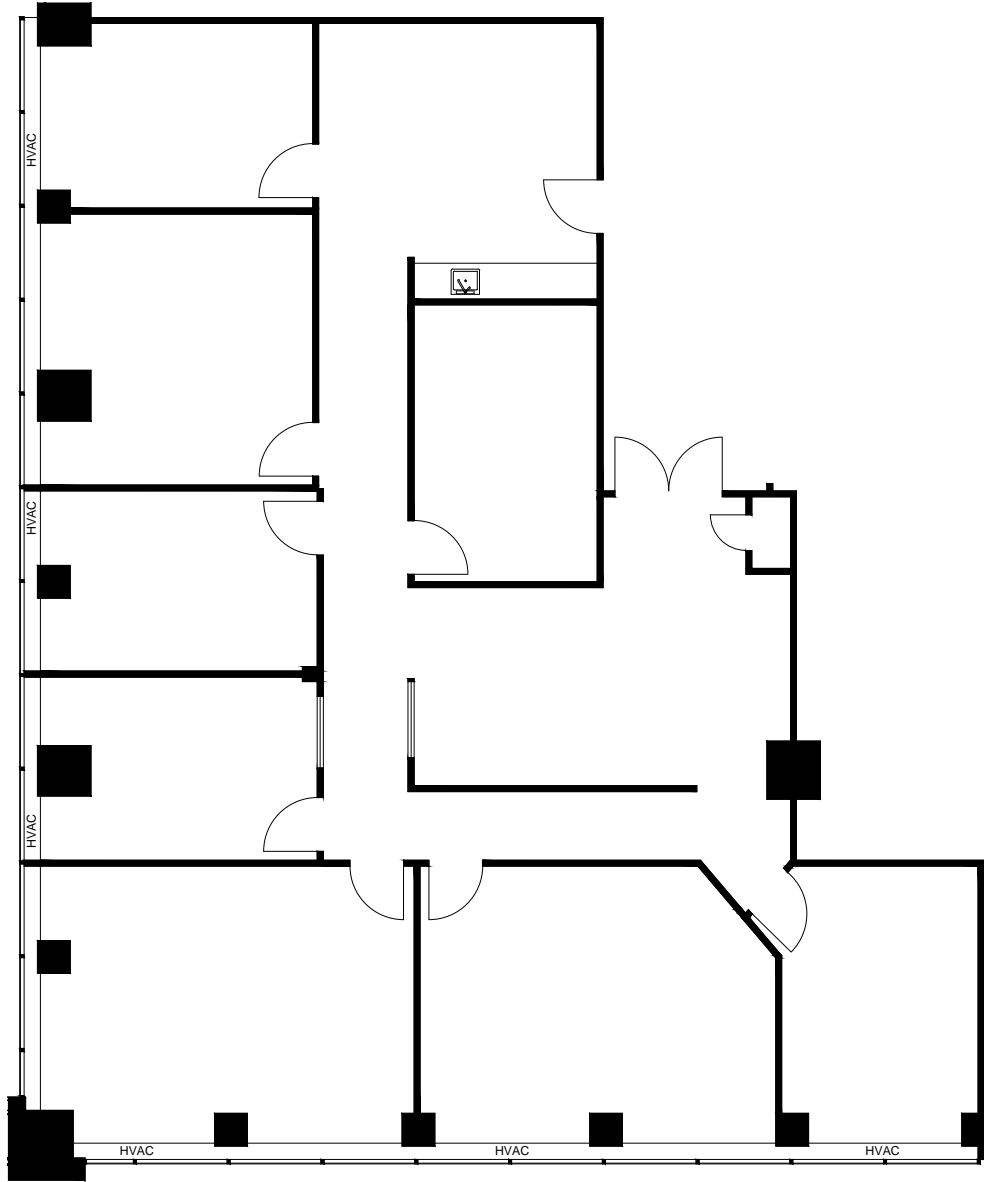
MACKENZIE SHARPE**
Senior Vice President
+1 416 815 2382
mackenzie.sharpe@cbre.com

KATE CAMENZULI*
Vice President
+1 416 815 2380
kate.camenzuli@cbre.com

JESSICA BRILLINGER
Sales Representative
+1 416 815 2347
jessica.brillinger@cbre.com

10TH FLOOR

Suite: 1010 | Size: 3,182 sq. ft. | Available: Immediate



Greenrock **CBRE** POSTMEDIAPLACE

*Sales Representative **Broker

MYAH OLLEK
Sales Representative
+1 416 815 2353
myah.ollek@cbre.com

BRENDAN J. SULLIVAN*
Senior Vice President
+1 416 847 3262
brendan.sullivan@cbre.com

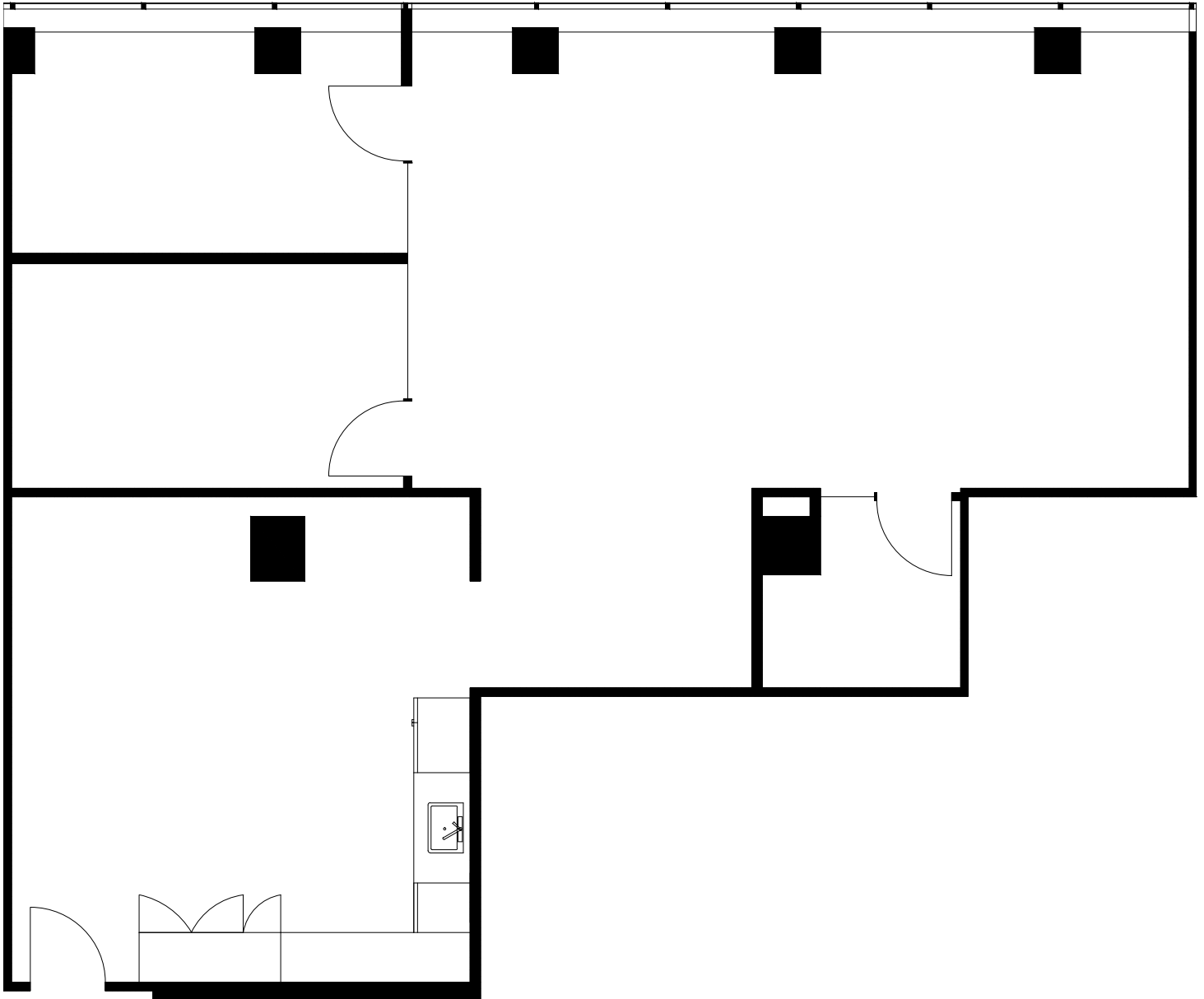
MACKENZIE SHARPE**
Senior Vice President
+1 416 815 2382
mackenzie.sharpe@cbre.com

KATE CAMENZULI*
Vice President
+1 416 815 2380
kate.camenzuli@cbre.com

JESSICA BRILLINGER
Sales Representative
+1 416 815 2347
jessica.brillinger@cbre.com

10TH FLOOR

Suite: 1004 | Size: 1,745 sq. ft. | Available: August 1, 2022



Greenrock **CBRE** POSTMEDIAPLACE

*Sales Representative **Broker

MYAH OLLEK
Sales Representative
+1 416 815 2353
myah.ollek@cbre.com

BRENDAN J. SULLIVAN*
Senior Vice President
+1 416 847 3262
brendan.sullivan@cbre.com

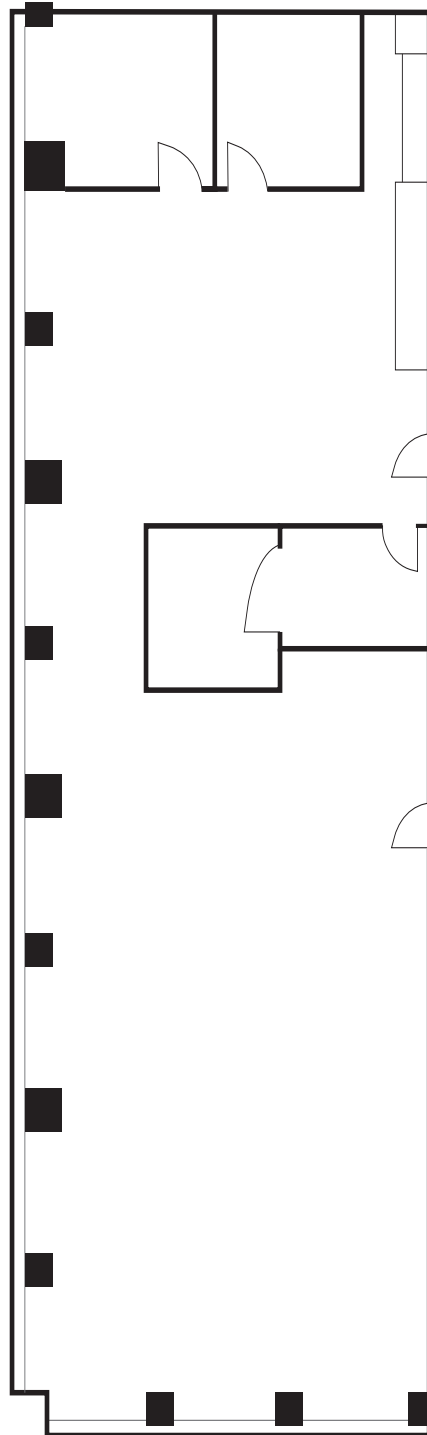
MACKENZIE SHARPE**
Senior Vice President
+1 416 815 2382
mackenzie.sharpe@cbre.com

KATE CAMENZULI*
Vice President
+1 416 815 2380
kate.camenzuli@cbre.com

JESSICA BRILLINGER
Sales Representative
+1 416 815 2347
jessica.brillinger@cbre.com

8TH FLOOR

Suite: 801 | Size: 3,768 sq. ft. | Available: Immediate



Greenrock **CBRE** POSTMEDIAPLACE

*Sales Representative **Broker

MYAH OLLEK
Sales Representative
+1 416 815 2353
myah.ollek@cbre.com

BRENDAN J. SULLIVAN*
Senior Vice President
+1 416 847 3262
brendan.sullivan@cbre.com

MACKENZIE SHARPE**
Senior Vice President
+1 416 815 2382
mackenzie.sharpe@cbre.com

KATE CAMENZULI*
Vice President
+1 416 815 2380
kate.camenzuli@cbre.com

JESSICA BRILLINGER
Sales Representative
+1 416 815 2347
jessica.brillinger@cbre.com

365 BLOOR STREET EAST

Greenrock **CBRE** POSTMEDIAPLACE

*Sales Representative **Broker

MYAH OLLEK
Sales Representative
+1 416 815 2353
myah.ollek@cbre.com

BRENDAN J. SULLIVAN*
Senior Vice President
+1 416 847 3262
brendan.sullivan@cbre.com

MACKENZIE SHARPE**
Senior Vice President
+1 416 815 2382
mackenzie.sharpe@cbre.com

KATE CAMENZULI*
Vice President
+1 416 815 2380
kate.camenzuli@cbre.com

JESSICA BRILLINGER
Sales Representative
+1 416 815 2347
jessica.brillinger@cbre.com