



OFFICE SPACE FOR SUBLEASE
1008 HOMER STREET
Vancouver, British Columbia

VIRTUAL TOUR
NOW AVAILABLE
CONTACT AGENT

BEAUTIFUL BRICK AND BEAM SPACE IN THE HEART OF YALETOWN
RECENTLY RENOVATED WITH MODERN FINISHES AND PLENTY OF NATURAL LIGHT

HEALI THIRLWELL
604 662 5576
heali.thirlwell@cbre.com

CBRE



Prominently located on the corner of Homer and Nelson Streets, in the heart of Yaletown.
 4 minute walk to the Yaletown Roundhouse SkyTrain Station.
 Surrounded by an abundance of restaurants, cafés, boutiques and services.

INSPIRING BRICK AND BEAM SPACE. MAINLY OPEN PLAN WITH ONE GLASSED IN BOARDROOM, AND TWO BREAK OUT ROOMS.

PREMISES

Suite 316

Approx. 2,900 rentable Sq. Ft.

SUBLEASE TERM EXPIRY

March 30, 2022

ASKING GROSS RENT

\$35 Gross Per Sq. Ft.

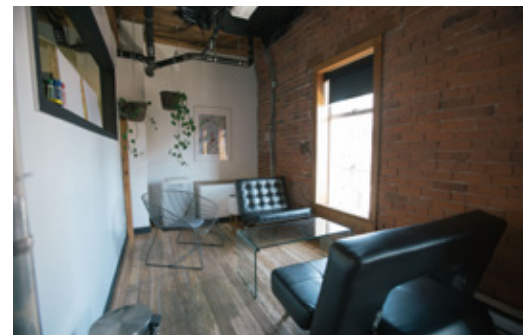
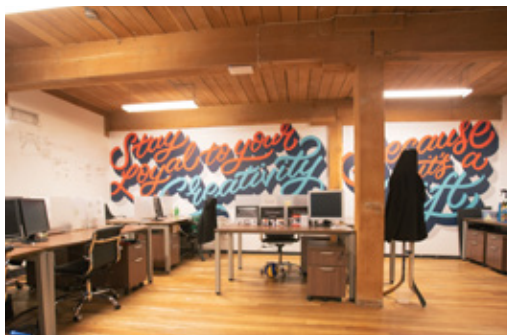
AVAILABLE

Immediately

HEALI THIRLWELL

604 662 5576

heali.thirlwell@cbre.com



CBRE Limited | 1021 West Hastings Street | Suite 2500 | Vancouver, BC V6C 0C3 | www.cbre.ca

This disclaimer shall apply to CBRE Limited, Real Estate Brokerage, and to all other divisions of the Corporation; to include all employees and independent contractors ("CBRE"). The information set out herein, including, without limitation, any projections, images, opinions, assumptions and estimates obtained from third parties (the "Information") has not been verified by CBRE, and CBRE does not represent, warrant or guarantee the accuracy, correctness and completeness of the Information. CBRE does not accept or assume any responsibility or liability, direct or consequential, for the Information or the recipient's reliance upon the Information. The recipient of the Information should take such steps as the recipient may deem necessary to verify the Information prior to placing any reliance upon the Information. The information may change and any property described in the Information may be withdrawn from the market at any time without notice or obligation to the recipient from CBRE. CBRE and the CBRE logo are the service marks of CBRE Limited and/or its affiliated or related companies in other countries. All other marks displayed on this document are the property of their respective owners. All Rights Reserved. Mapping Sources: Canadian Mapping Services canadamapping@cbre.com; DMTI Spatial, Envrionics Analytics, Microsoft Bing, Google Earth.



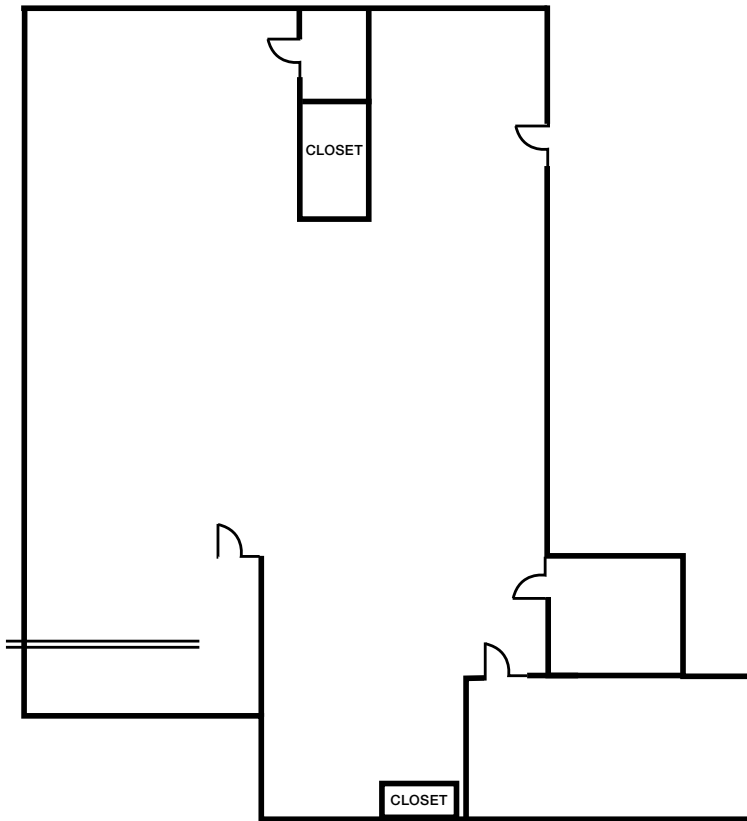
OFFICE SPACE FOR SUBLEASE

1008 HOMER STREET

Vancouver, British Columbia

VIRTUAL TOUR
NOW AVAILABLE
CONTACT AGENT

FLOOR PLAN - SUITE 316



Not to scale

HEALI THIRLWELL
604 662 5576
heali.thirlwell@cbre.com

CBRE Limited | 1021 West Hastings Street | Suite 2500 | Vancouver, BC V6C 0C3 | www.cbre.ca

This disclaimer shall apply to CBRE Limited, Real Estate Brokerage, and to all other divisions of the Corporation; to include all employees and independent contractors ("CBRE"). The information set out herein, including, without limitation, any projections, images, opinions, assumptions and estimates obtained from third parties (the "Information") has not been verified by CBRE, and CBRE does not represent, warrant or guarantee the accuracy, correctness and completeness of the Information. CBRE does not accept or assume any responsibility or liability, direct or consequential, for the Information or the recipient's reliance upon the Information. The recipient of the Information should take such steps as the recipient may deem necessary to verify the Information prior to placing any reliance upon the Information. The Information may change and any property described in the Information may be withdrawn from the market at any time without notice or obligation to the recipient from CBRE. CBRE and the CBRE logo are the service marks of CBRE Limited and/or its affiliated or related companies in other countries. All other marks displayed on this document are the property of their respective owners. All Rights Reserved.
Mapping Sources: Canadian Mapping Services canadamapping@cbre.com; DMTI Spatial, Environics Analytics, Microsoft Bing, Google Earth.

CBRE