

# The TED

*6290 Quinpool Road, Halifax*



High Traffic Retail Space



Available Fall 2022



Unit Sizes – Up to ±4,000 sq. ft.  
& ±3,537 sq. ft.



Vent shaft in place for Restaurants





# Property Overview

## LOCATION

6290 Quinpool Road, Halifax

## PROPERTY TYPE

Mixed use residential with ground floor commercial space

## UNIT SIZES

±4,000 sq. ft. & ±3,537 sq. ft.

## AVAILABLE

Fall 2022



Prime ground floor retail with excellent visibility



Ideal for luxury retailers, spas, and restaurants.



High ceilings, large windows & exceptional natural light



115' of frontage on Quinpool Road



High vehicular & pedestrian traffic



Vent shaft in place for restaurant users



# Location

## *Transforming Quinpool Road's Streetscape*

Ideally located on Quinpool Road, the TED's prime positioning places it central to the Downtown Core, the sought after South End and is easily accessed from the rapidly growing and developing North and West Ends of the Peninsula. Central to it all and on one of Halifax's most traveled roadways, the TED can't be missed.

This high profile mixed use development extends from Quinpool Road to Pepperell Street and will bring

67 luxury apartments to Halifax's tight rental market and new supply of well appointed commercial space to this vibrant business district.

In the immediate area you will join over 120 businesses in the Quinpool Business District consisting of a unique mix of local retailers and services, health and wellness services, restaurants, financial institutions and larger format grocery and homeware stores.

120+

Businesses in the Quinpool District

25,000

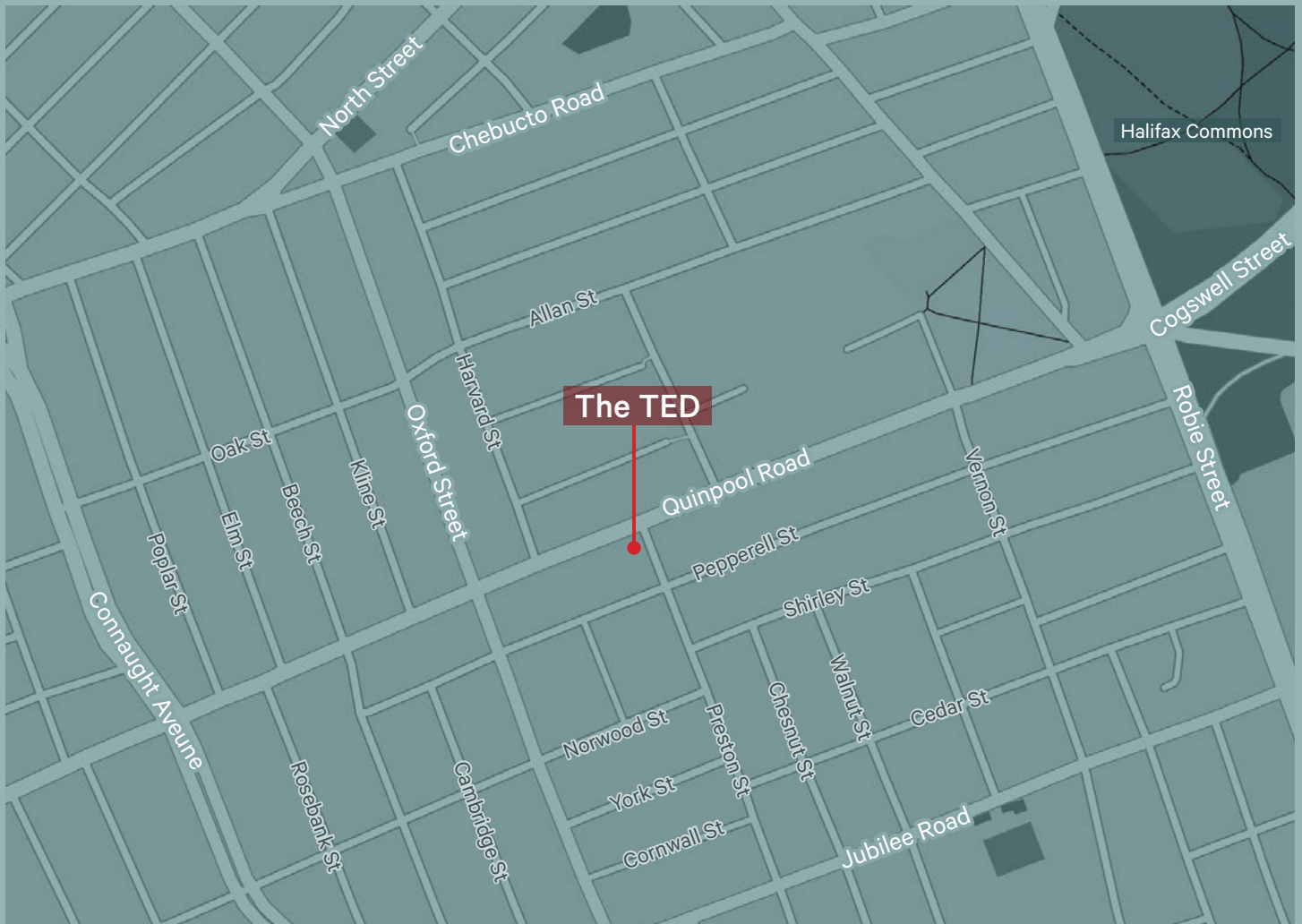
Vehicles Per Day

\$96,000

Avg household income (3km)

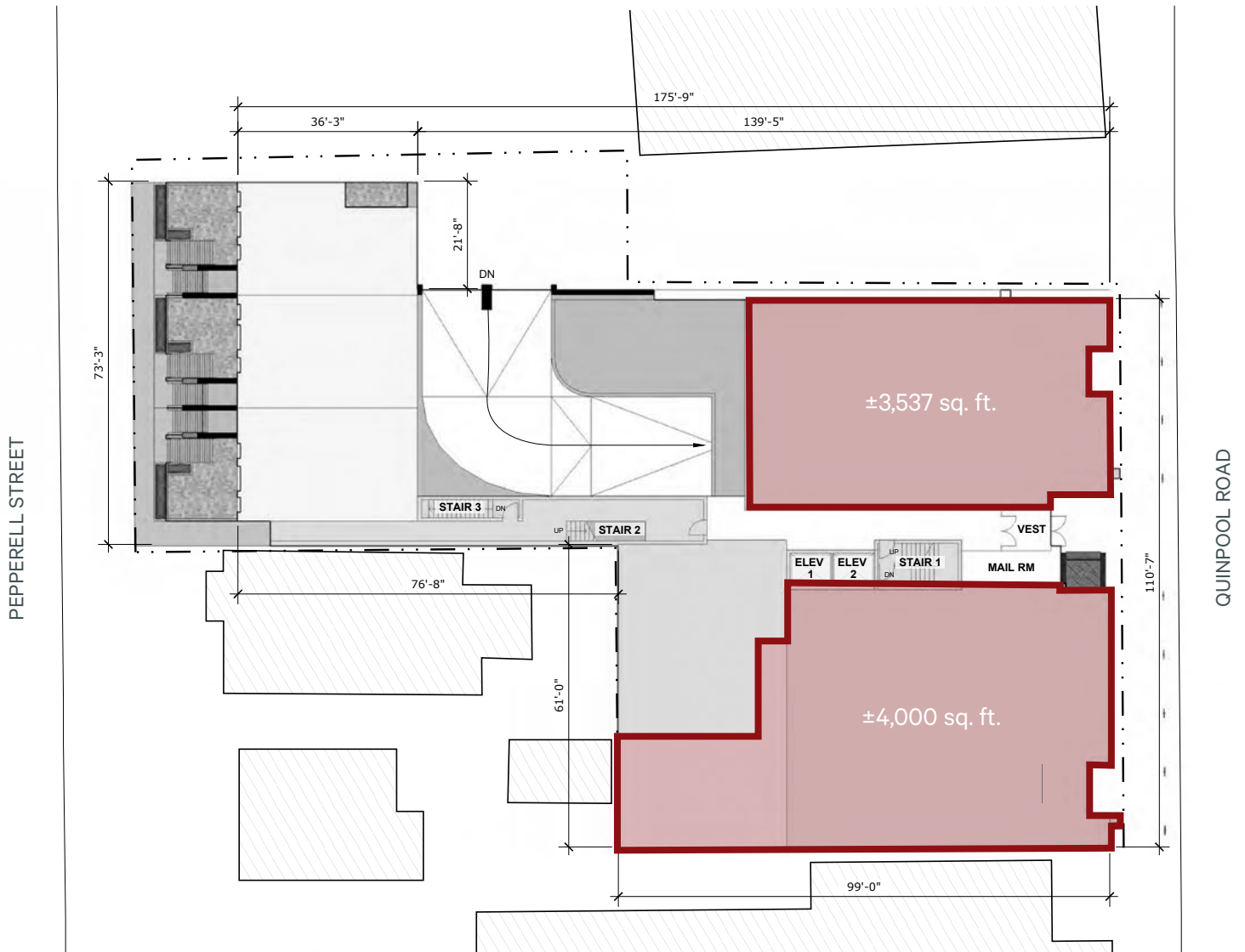
136,000

Day time population (3km)



# Floor Plan

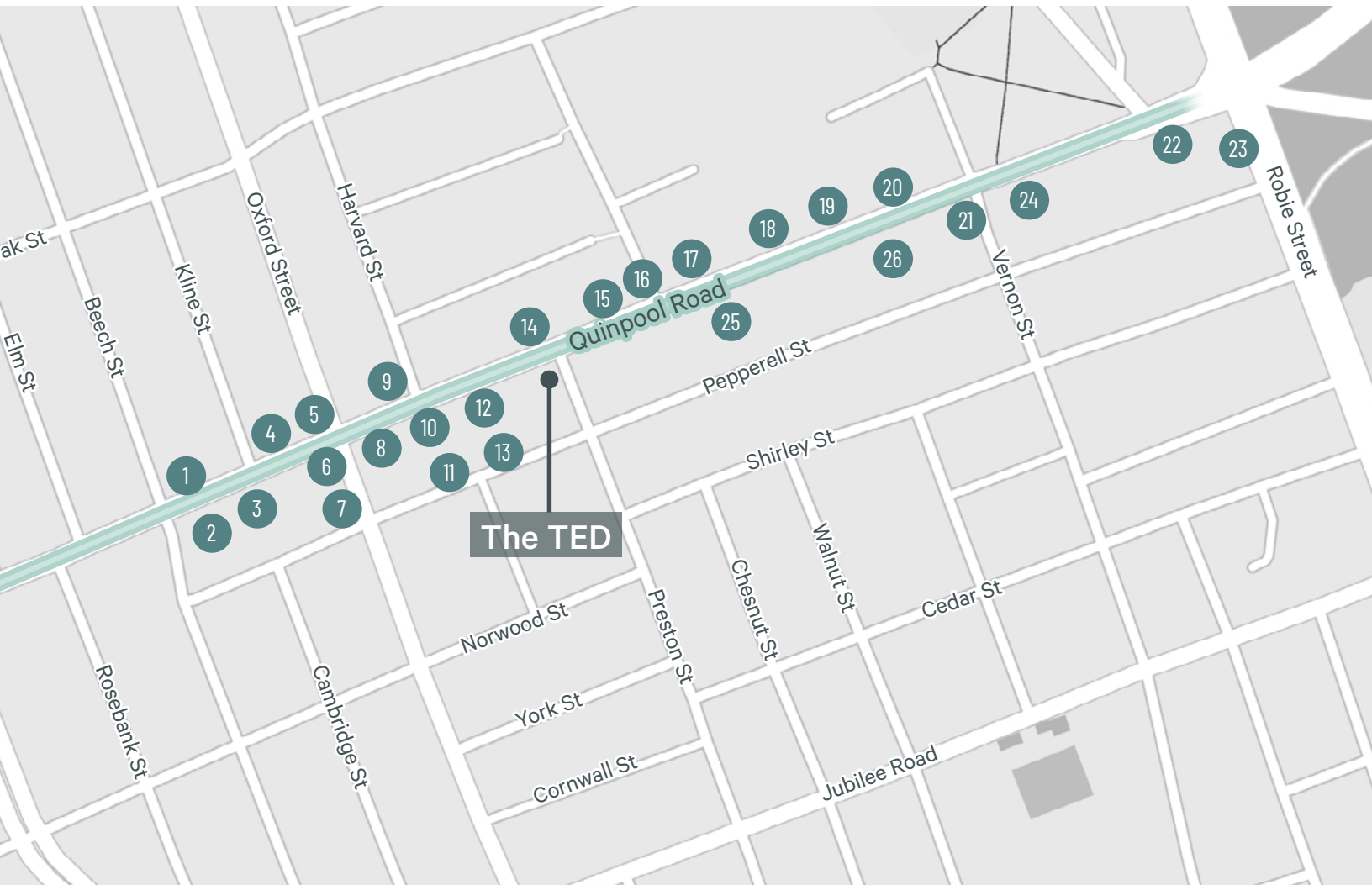
*High profile ground floor commercial space on Quinpool Road*





# Quinpool Road

*High Traffic Retail Location*



## Prominent Retailers

- |                       |                  |                       |                         |
|-----------------------|------------------|-----------------------|-------------------------|
| 1. Tim Hortons        | 8. RBC           | 15. East Coast Bakery | 22. The Cheeky Neighbor |
| 2. Noodle Nami        | 9. Petro Canada  | 16. TD                | 23. Atlantica hotel     |
| 3. Sarah & Tom        | 10. Fitness FX   | 17. Canadian Tire     | 24. Dilly Dally         |
| 4. Medicine Shoppe    | 11. McDonald's   | 18. Wendy's           | 25. Blue Olive          |
| 5. Wasabi House       | 12. Pizza Hut    | 19. NSLC              | 26. Move East           |
| 6. East Peak Climbing | 13. KFC          | 20. Superstore        |                         |
| 7. Oxford Taproom     | 14. Quinn's Arms | 21. The Trail Shop    |                         |



## 6290 Quinpool Road, Halifax

### For more information, please contact:

**Mat Houston**  
Associate Vice President  
T 902 492 2074  
M 902 412 2940  
mathew.houston@cbre.com

**Donald Tabor**  
Sales Representative  
T 902 492 2061  
M 902 471 0481  
donald.tabor@cbre.com

This disclaimer shall apply to CBRE Limited, Real Estate Brokerage, and to all other divisions of the Corporation; to include all employees and independent contractors ("CBRE"). All references to CBRE Limited herein shall be deemed to include CBRE, Inc. The information set out herein, including, without limitation, any projections, images, opinions, assumptions and estimates obtained from third parties (the "Information") has not been verified by CBRE, and CBRE does not represent, warrant or guarantee the accuracy, correctness and completeness of the Information. CBRE does not accept or assume any responsibility or liability, direct or consequential, for the Information or the recipient's reliance upon the Information. The recipient of the Information should take such steps as the recipient may deem necessary to verify the Information prior to placing any reliance upon the Information. The Information may change and any property described in the Information may be withdrawn from the market at any time without notice or obligation to the recipient from CBRE. CBRE and the CBRE logo are the service marks of CBRE Limited and/or its affiliated or related companies in other countries. All other marks displayed on this document are the property of their respective owners. All Rights Reserved.