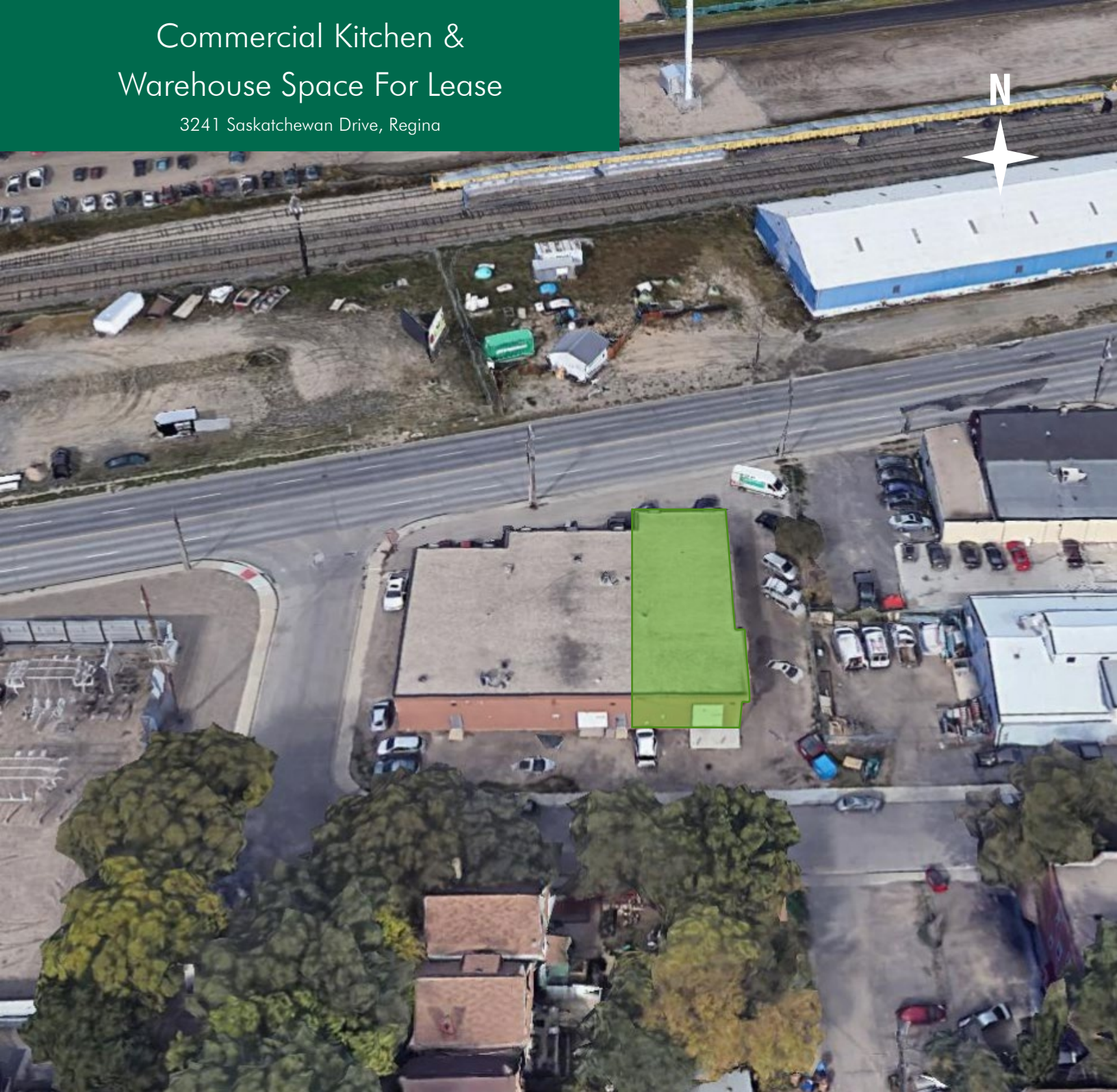


# Commercial Kitchen & Warehouse Space For Lease

3241 Saskatchewan Drive, Regina



## Walker Moulding

Senior Associate  
walker@cbre.com  
306 525 2273

**CBRE**

[www.cbre.ca/saskatchewan](http://www.cbre.ca/saskatchewan)



PROPERTY DETAILS

Neighborhood:	Cathedral
Available Size:	2,904 SF
Lease Rate:	\$16.00
Operating Costs:	\$3.75
Power & Gas	Separately Metered
Parking:	Paved, On-site
Loading:	Grade door
Possession:	May 2021

PROPERTY HIGHLIGHTS

This space was previously used by a food preparation company and restaurant. The unit has all of the necessary amenities to support a full commercial kitchen. There is an overhead door in the back with a small warehouse/storage area. This site has a high traffic count along Saskatchewan Drive with good visibility.





# 3241 Saskatchewan Drive

## REGINA | SK

### SITE PLAN

