

Class "A"

Office Space

FOR LEASE

Suite 301
1223 Michael St.
Ottawa, ON



Andrew Eberhard
Sales Representative
aeberhard@ieproperties.com
613.226.9902

Building Highlights

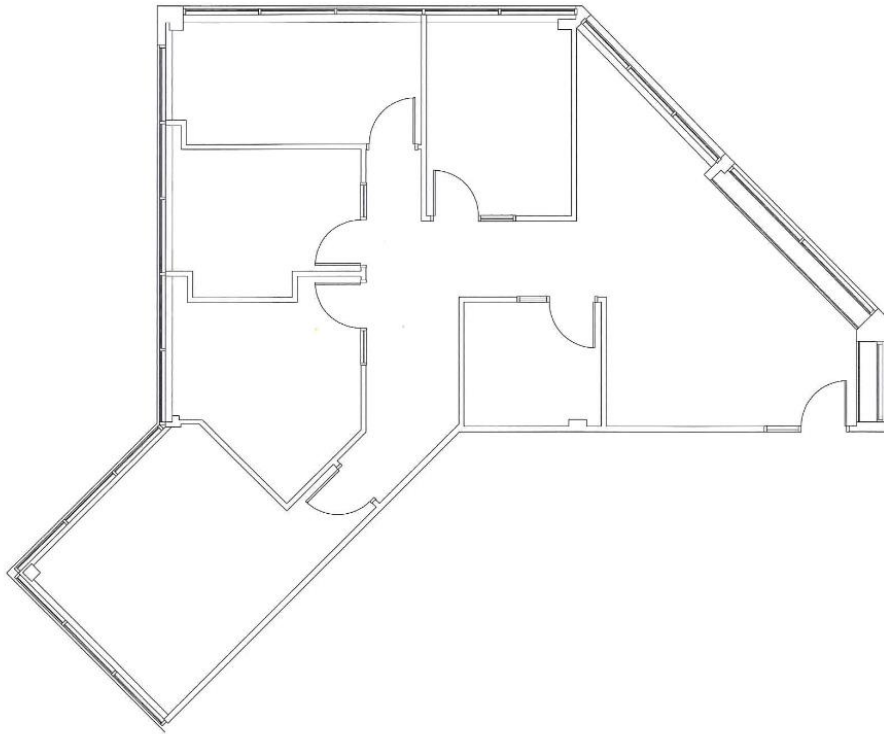
1223 Michael Street is located in the Queensway Corporate Campus in East Ottawa with frontage on Highway 417 and offers:

- Central location right next to St Laurent Boulevard interchange on Highway 417
- Turn key office space with 4 enclosed offices, boardroom, filing room, kitchenette and reception area
- 400 meter walk to the new Cyrville LRT Station
- Ample parking on-site
- Recently renovated marble lobby, front entrance and parking lot
- On-site cafeteria
- Close proximity to St Laurent Shopping Centre that offers: a gym, multiple restaurants, shops, and services.

| | |
|-------------------------|--------------------------|
| Premises: | 1,523 sf |
| Basic Rent: | Negotiable |
| Additional Rent: | \$23.61 psf (2019 est.) |
| Included: | Utilities and Janitorial |
| Available: | Immediate |
| Parking: | 3 / 1000 square feet |



Floor Plan – Suite 301



Gallery





Andrew Eberhard
Sales Representative
aeberhard@ieproperties.com
613.226.9902

IEPROPERTIES.COM