



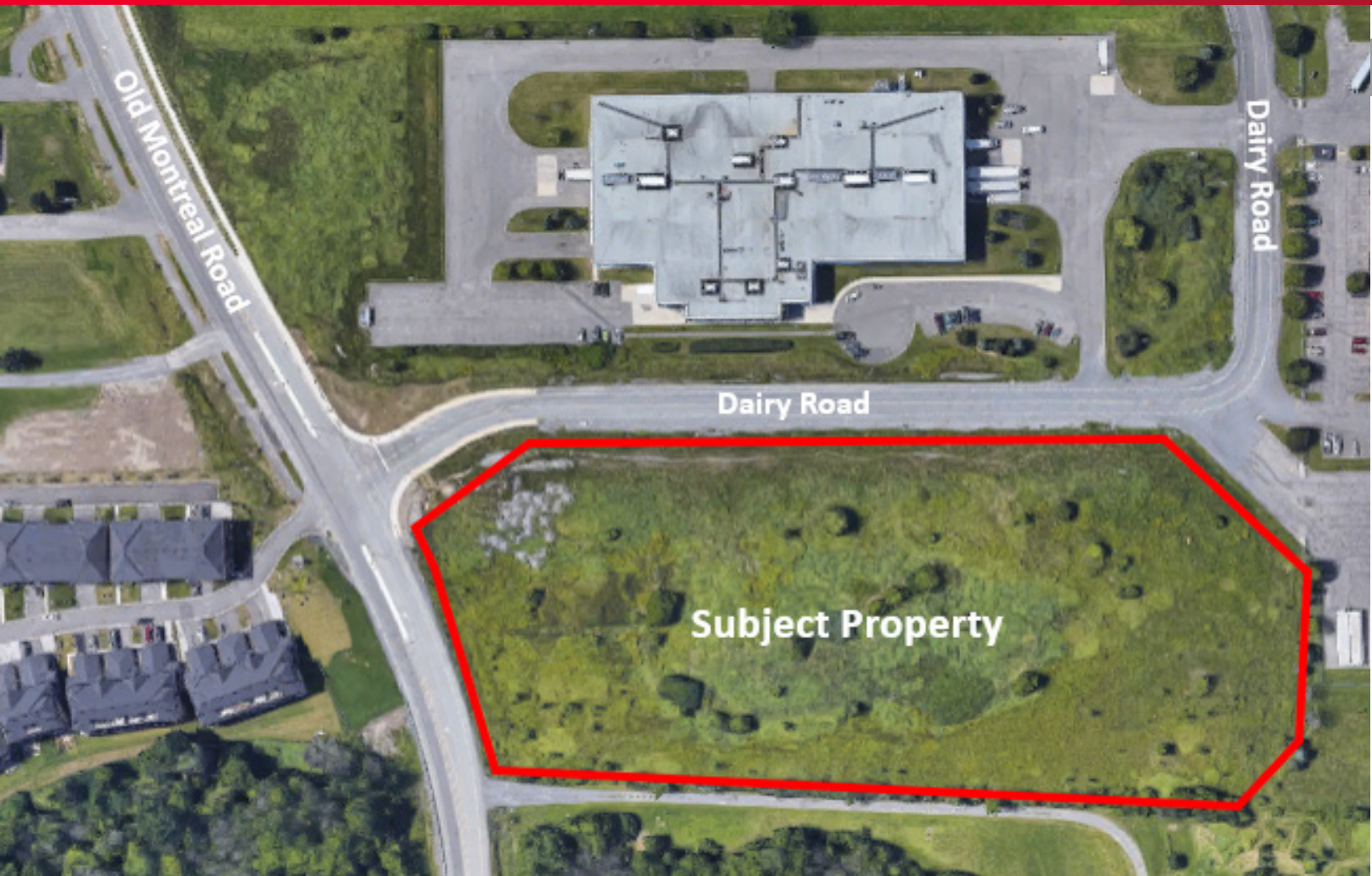
**CUSHMAN &
WAKEFIELD**

Ottawa

FOR LEASE : BUILD TO SUIT INDUSTRIAL BUILDING

1045 DAIRY DRIVE

Ottawa, ON



PROPERTY DETAILS

INDUSTRIAL BUILDING:

SIZE:

DELIVERY:

ZONING:

BUILD TO SUIT INDUSTRIAL BUILDING

50,000 - 100,000 SF APPROXIMATELY

TBD

IL4 H(21) LIGHT INDUSTRIAL

For more information, please contact:

Ryan Barresi
Broker| Vice President
Commercial Sales and Leasing
+ 1 613 780 1578
rbarresi@cwottawa.com

Neil Mason
Sales Representative
+ 1 613 780 1571
nmason@cwottawa.com

55 Metcalfe Street, Suite 400
Ottawa ON K1P 6L5
T +1 613 236 7777
F +1 613 236 5958
cwottawa.com



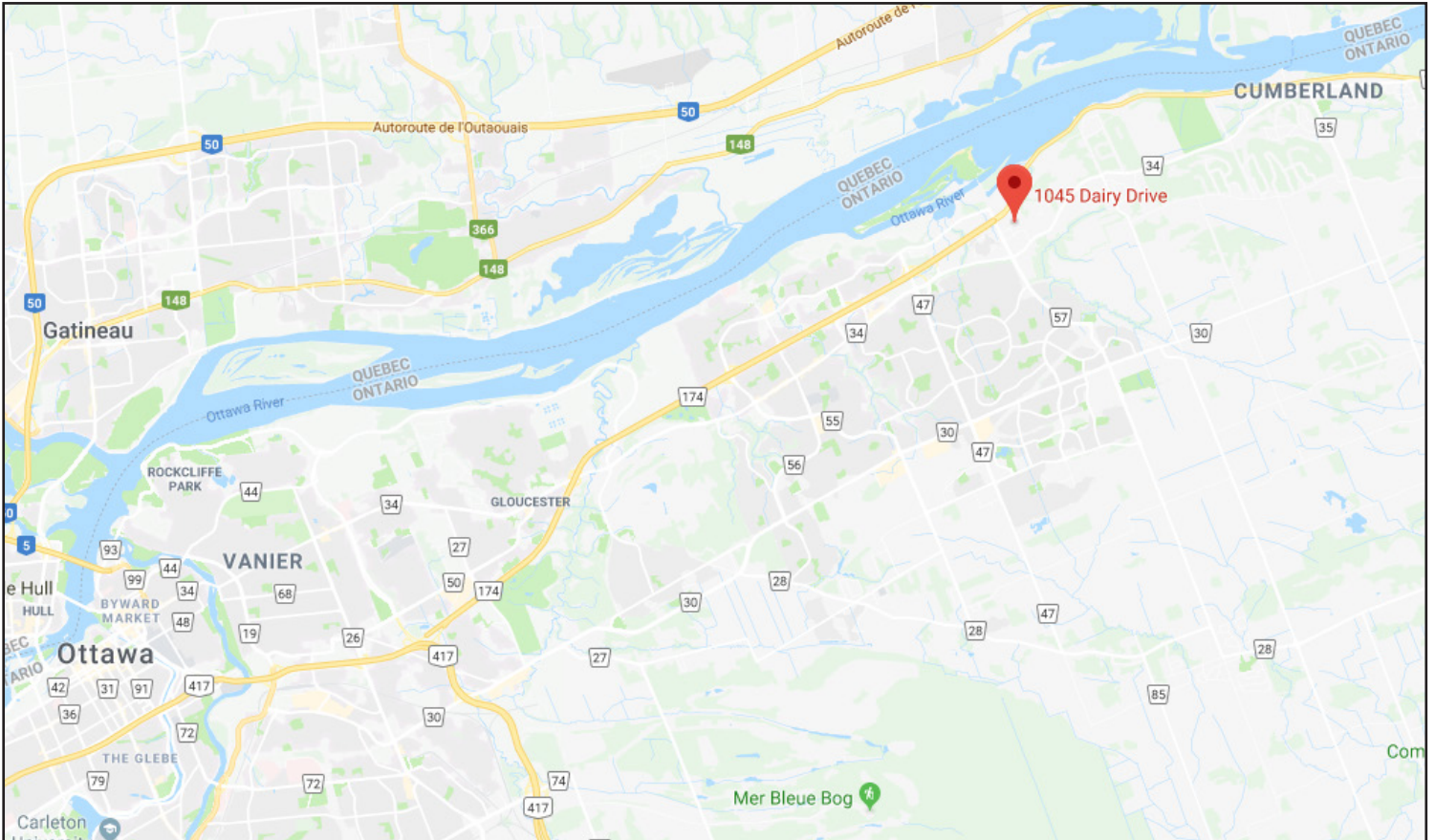
**CUSHMAN &
WAKEFIELD**

Ottawa

FOR LEASE : BUILD TO SUIT INDUSTRIAL BUILDING

1045 DAIRY DRIVE

Ottawa, ON



Property Features:

- Prime location in Orleans
- Close to Transitway, future LRT station & multiple new home developments
- Excellent access to major highways

Ryan Barresi

Broker | Vice President
Commercial Sales & Leasing
+1 613 780 1578
rbarresi@cwottawa.com

Neil Mason

Sales Representative
+1 613 780 1571
nmason@cwottawa.com

55 Metcalfe Street, Suite 400
Ottawa ON K1P 6L5
T +1 613 236 7777
F +1 613 236 5958
cwottawa.com



**CUSHMAN &
WAKEFIELD**

Ottawa

FOR LEASE : BUILD TO SUIT INDUSTRIAL BUILDING

1045 DAIRY DRIVE

Ottawa, ON

Site Location



Ryan Barresi

Broker | Vice President
Commercial Sales & Leasing
+1 613 780 1578
rbarresi@cwottawa.com

Neil Mason

Sales Representative
+1 613 780 1571
nmason@cwottawa.com

55 Metcalfe Street, Suite 400
Ottawa ON K1P 6L5

T +1 613 236 7777

F +1 613 236 5958

cwottawa.com