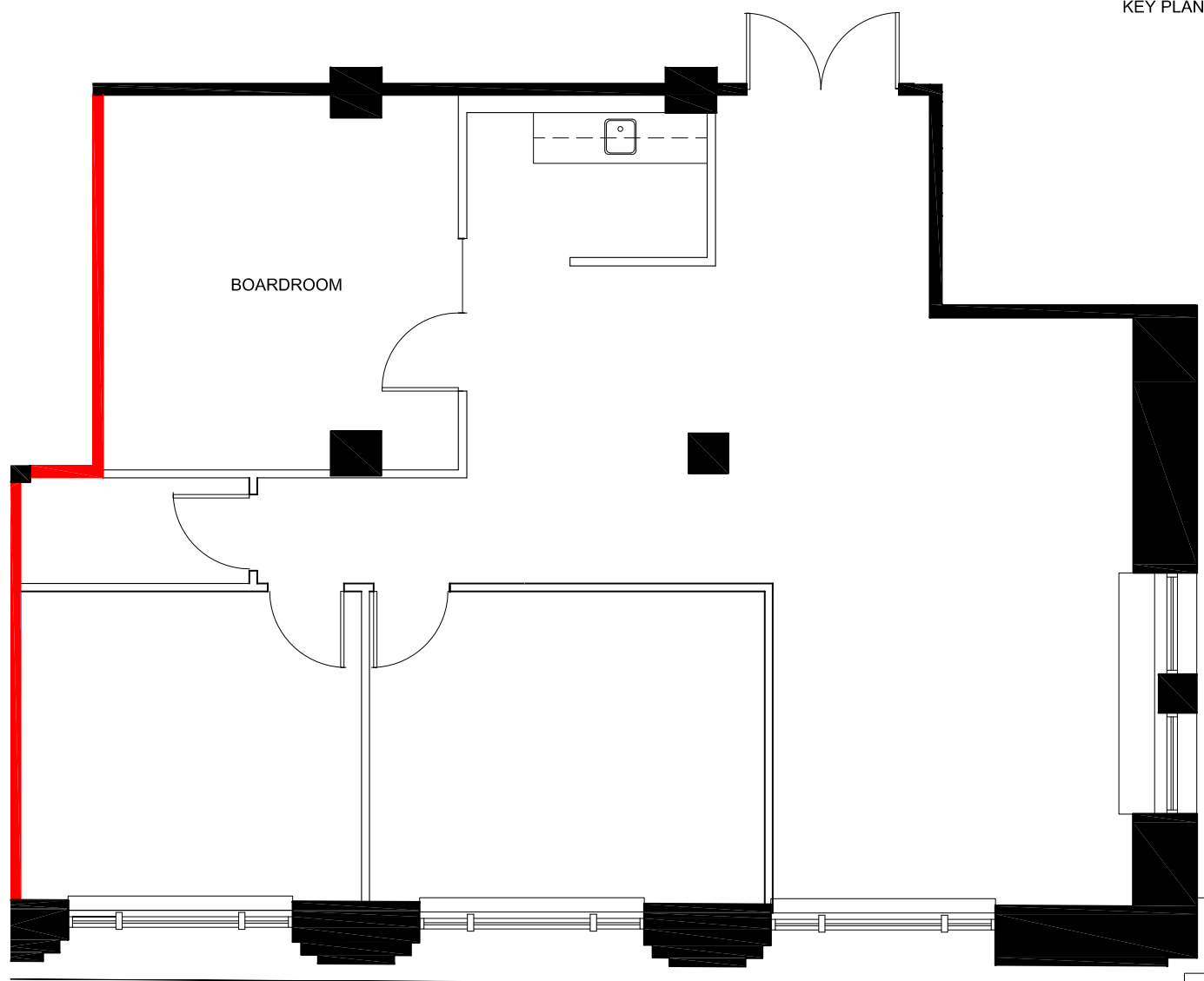


KEY PLAN



— DEMISING WALL



SUITE 1800

RENTABLE AREA = 2,629 SF

ABOVE INFORMATION ESTABLISHED ACCORDING
TO ANSI \ BOMA Z65.1 1996

February 04, 2021

© 2021 Space Database Inc. All Rights Reserved



8 King Street East
Toronto, Ontario
Suite 1800

