

FOR LEASE

SUITE 160

109 QUARRY PARK BLVD SE

PROPERTY FACTS

ADDRESS:	109 Quarry Park Boulevard
LOCATION:	South East
BUILDING CLASS:	A
TOTAL BUILDING SIZE:	86,474 SF
TYPICAL FLOOR PLATE:	28,800 SF
YEAR BUILT:	2009
NUMBER OF FLOORS:	3
PARKING:	352 stalls (4.1 stalls per 1,000 SF)
PARKING COSTS:	\$155/month underground stall No charge surface stalls
CERTIFICATIONS:	LEED Gold, Boma Best Silver
BUILDING HOURS:	Mon-Tues 6:00am - 7:30pm Wed-Thurs 6:00am - 9:00pm Friday 6:00am - 7:30pm Saturday 7:00am - 3:30pm
SUITE 140 AREA:	2,950 SF
RENTAL RATE:	Market
OPERATING COSTS:	\$19.54 PSF/Annum (2021 Est.)



BentallGreenOak 

PAIGE MAGNUSSEN
LEASING MANAGER
403-303-2483
PAIGE.MAGNUSSEN@BENTALLGREENOAK.COM

SUITE 160

109 QUARRY PARK BLVD SE

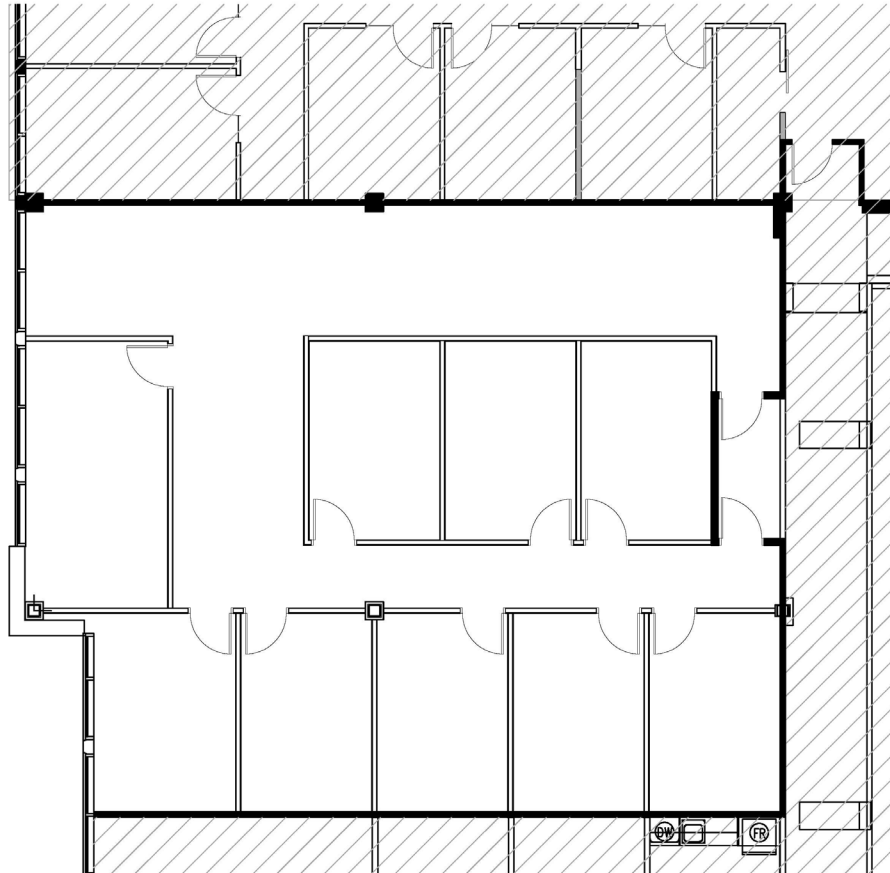
FOR LEASE

SUITE 160

109 QUARRY PARK BLVD SE

SUITE 160 | FLOOR PLAN

- Convenient main floor access
- Parking ratios suitable for medical uses



BentallGreenOak 

PAIGE MAGNUSSEN
LEASING MANAGER
403-303-2483
PAIGE.MAGNUSSEN@BENTALLGREENOAK.COM

SUITE 160

109 QUARRY PARK BLVD SE

109 QUARRY PARK BLVD

PROUDLY MANAGED BY BENTALLGREENOAK



OUR FOCUS ON SUSTAINABLE MANAGEMENT

At BentallGreenOak we are committed to sustainability and living green. The Global Real Estate Sustainability Benchmark (GRESB), Leed Canada, and BOMA BEST are all committed to assessing the sustainability performance of real estate companies around the globe. BentallGreenOak has been recognized by GRESB as the top diversified firm in Canada, and by LEED, and BOMA BEST for excellence in Environmental Management & Performance, Optimal Energy Performance, and more.

CLIKFIX - OUR 24 HOUR TENANT CONTACT CENTRE

ClikFIX is the tenant services contact centre that supports 109 Quarry Park. It features multiple methods of contact 24 hours a day, 7 days a week, ensuring that our tenants receive round-the-clock service.



BentallGreenOak 

PAIGE MAGNUSSEN
LEASING MANAGER
403-303-2483
PAIGE.MAGNUSSEN@BENTALLGREENOAK.COM

SUITE 160

109 QUARRY PARK BLVD SE