

# 360 Laurier Avenue

Ottawa, Ontario

Well Appointed Office Building in the Heart of Ottawa's CBD





360 Laurier Avenue West  
Ottawa, Ontario

For Lease



\$15.00

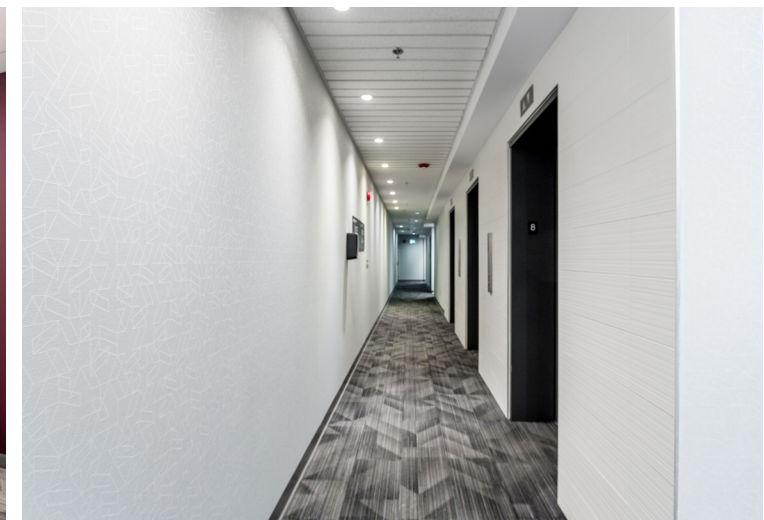
Asking Net Rent PSF

\$14.18

Additional Rent PSF (2022 est.)

# Building Details

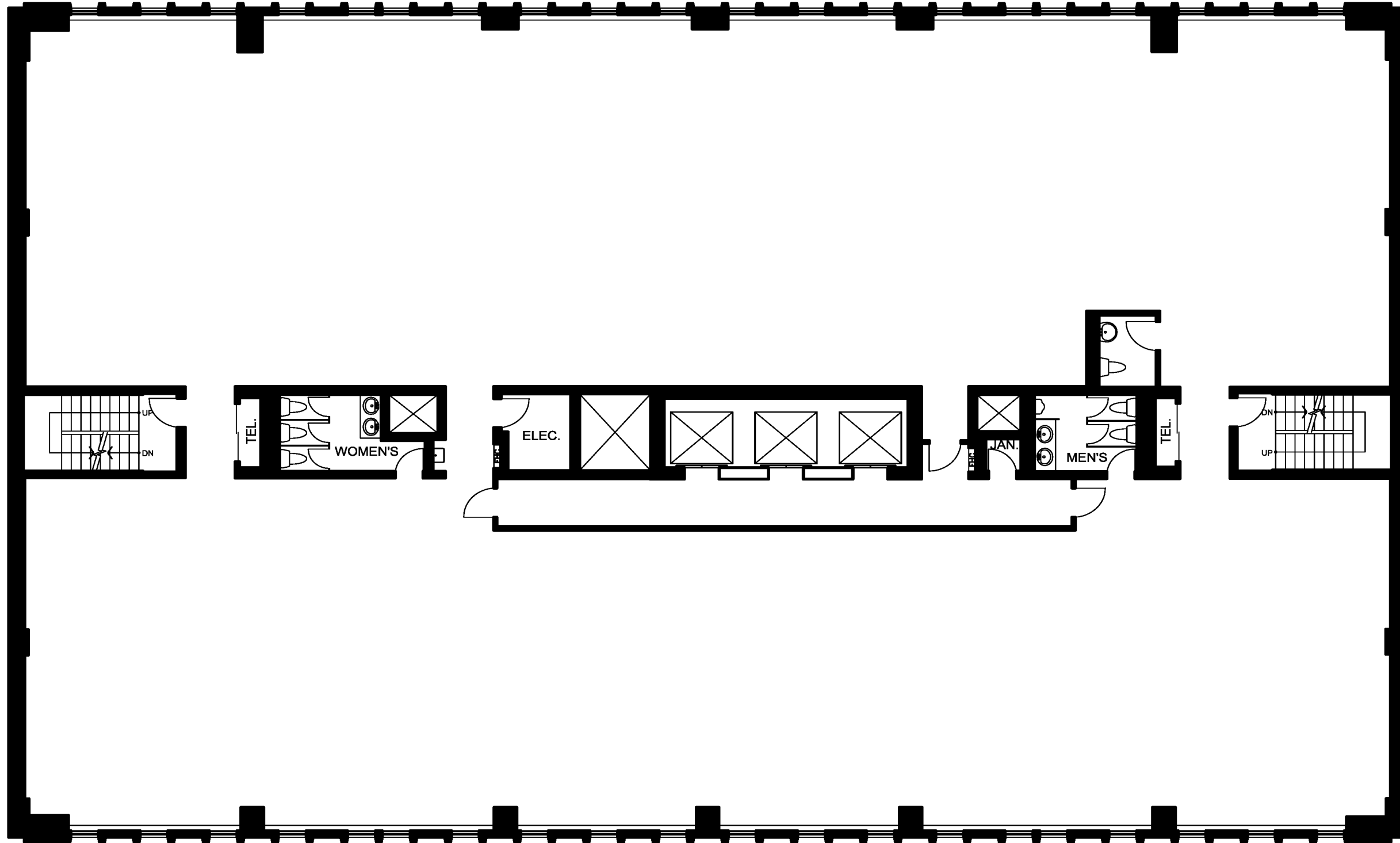
- Building Size: 112,437 square feet
- Typical Floor Plate: ~10,900 square feet
- Storeys: 11
- Parking: 65 stalls
- Building Certifications: BOMA Silver and LEED Gold
- Owned by: Starlight Investments & True North Commercial REIT
- Managed by: Crown Property Management





## Floor Plan

Typical Floor Plan



## Available February 2023!

### Availabilities

- 2nd Floor**  
10,056 square feet
- 3rd Floor**  
10,995 square feet
- 4th Floor**  
10,994 square feet
- 5th Floor**  
10,991 square feet
- 6th Floor**  
10,987 square feet
- 7th Floor**  
10,981 square feet
- 8th Floor**  
10,985 square feet
- 9th Floor**  
10,982 square feet
- 10th Floor**  
10,985 square feet
- 11th Floor**  
10,980 square feet

## Access & Amenities

### On-site Amenities



### Nearby Amenities



**LYON LRT STATION**  
5 MINUTE WALK | 400m



**PARLIAMENT HILL**  
7 MINUTE WALK | 600m



**BUS ROUTES**  
6 Greenboro - Rockcliffe  
7 Carleton - St. Laurent  
11 Parliament - Bayshore



**ACCESS TO HIGHWAY 417**  
3 MINUTE DRIVE | 1.3km

360 Laurier Avenue West occupies a prime location in the downtown core, benefitting from direct proximity to Ottawa's major shopping destinations, fine dining, entertainment venues, government buildings, historic landmarks and municipal parks. Within a ten-minute walking radius lies multiple national landmarks including Parliament Hill, the Centennial Flame, the Supreme Court, Confederation Park and multiple museums. Also within walking distance lies the CF Rideau Centre, Ottawa's premier shopping destination. Just east of the Property, easily accessible by transit, lies the ByWard Market – a historic market and focal point that features a diverse assortment of foods, services and entertainment.



NATIONAL GALLERY OF CANADA



PARLIAMENT HILL



FAIRMONT CHATEAU LAURIER



OTTAWA CONVENTION CENTRE



RIDEAU CANAL



DELTA OTTAWA CITY CENTRE



BYWARD MARKET



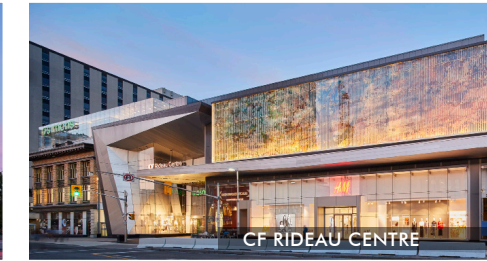
SPARKS STREET RETAIL DISTRICT



ALT HOTEL OTTAWA



NATIONAL ARTS CENTRE



CF RIDEAU CENTRE



METCALFE HOTEL



# 360 Laurier Avenue West

Ottawa, Ontario

# For Lease



## Contact Us

**Dominic Dostie\***

Senior Vice President

T: +1 613 751 2874

dominic.dostie@cbre.com

**CBRE Limited**

Real Estate Brokerage

T: +1 613 782 2266

www.cbre.ca/ottawa

\*Broker

This disclaimer shall apply to CBRE Limited, Real Estate Brokerage, and to all other divisions of the Corporation ("CBRE"). The information set out herein, including, without limitation, any projections, images, opinions, assumptions and estimates obtained from third parties (the "Information") has not been verified by CBRE, and CBRE does not represent, warrant or guarantee the accuracy, correctness and completeness of the Information. CBRE does not accept or assume any responsibility or liability, direct or consequential, for the Information or the recipient's reliance upon the Information. The recipient of the Information should take such steps as the recipient may deem necessary to verify the Information prior to placing any reliance upon the Information. The Information may change and any property described in the Information may be withdrawn from the market at any time without notice or obligation to the recipient from CBRE. CBRE and the CBRE logo are the service marks of CBRE Limited and/or its affiliated or related companies in other countries. All other marks displayed on this document are the property of their respective owners. All Rights Reserved.

www.cbre.ca