



SPACE FOR LEASE

889 West Pender (Pender and Hornby)



- Class “B” Building
- Downtown Core
- Cafe on main level
- Underground parking
- Walk to sky train, buses, banks
- HVAC & Sprinkler
- High speed & Fiber Internet access
- Signage available
- Shower Facilities
- Bike parking
- On site management

Available July1, 2022:

Suite 600 – 1,062Sq ft

Suite 601 – 1,488 Sq ft

Suite 604 – 1,093 Sq ft

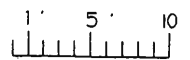
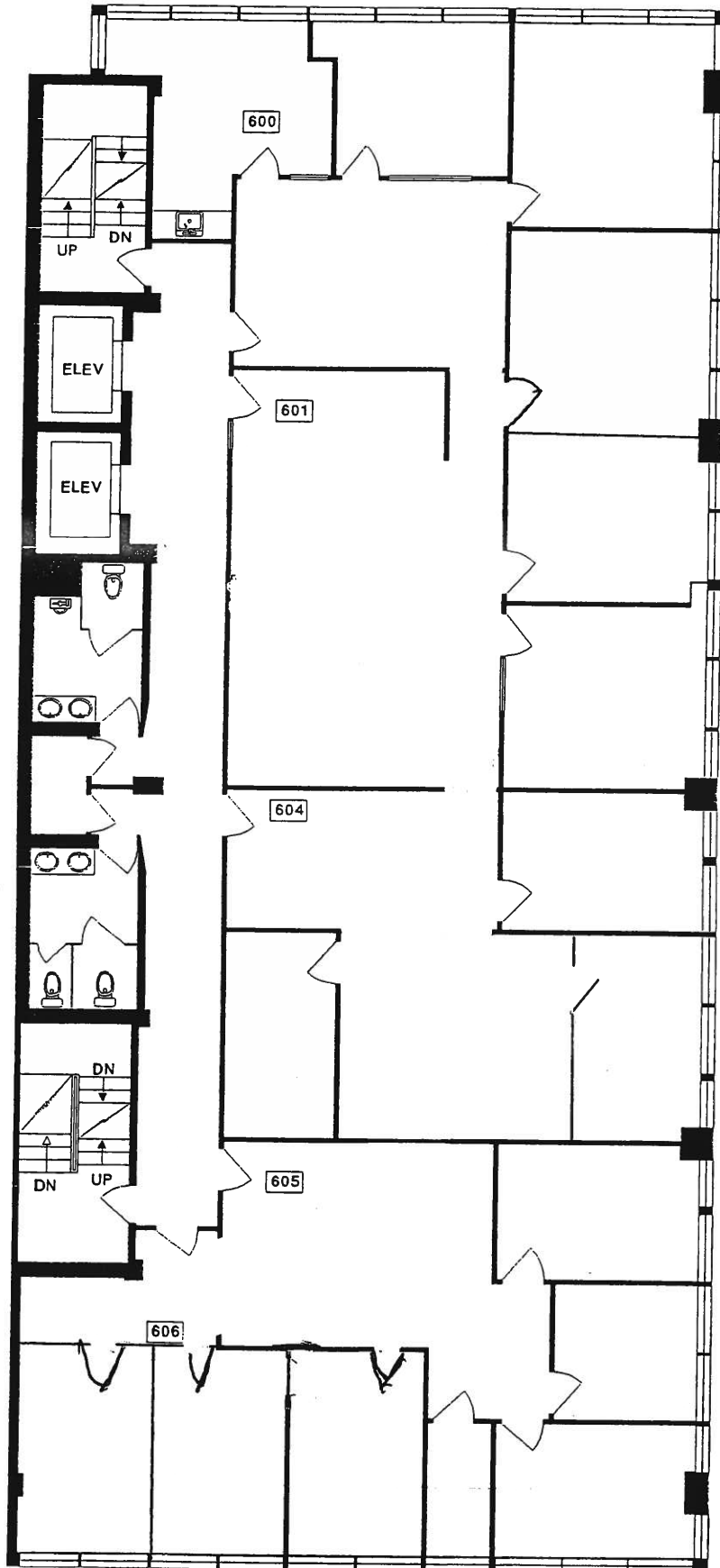
Totals from 2,550 Sq ft to 3,643 Sq ft

NNN rate ask representative

Operating expenses and Property Tax: Est. for 2022 \$18.95/Sq ft

889 W. PENDER ST.,
VANCOUVER, B.C.

SIXTH FLOOR



SCALE

M MEASURE MASTERS
VAN/BBY/TRU-CITIES
(604) 931-8585

DRAWN: AUG. 2001