



SPACE FOR LEASE

889 West Pender (Pender and Hornby)



- Class “B” Building
- Downtown Core
- Tim Hortons on main level
- Underground parking
- Walk to sky train, buses, banks
- HVAC & Sprinkler
- High speed & Fiber Internet access
- Signage available
- Shower Facilities
- Bike parking
- On site management

Available January 1, 2022:

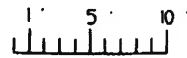
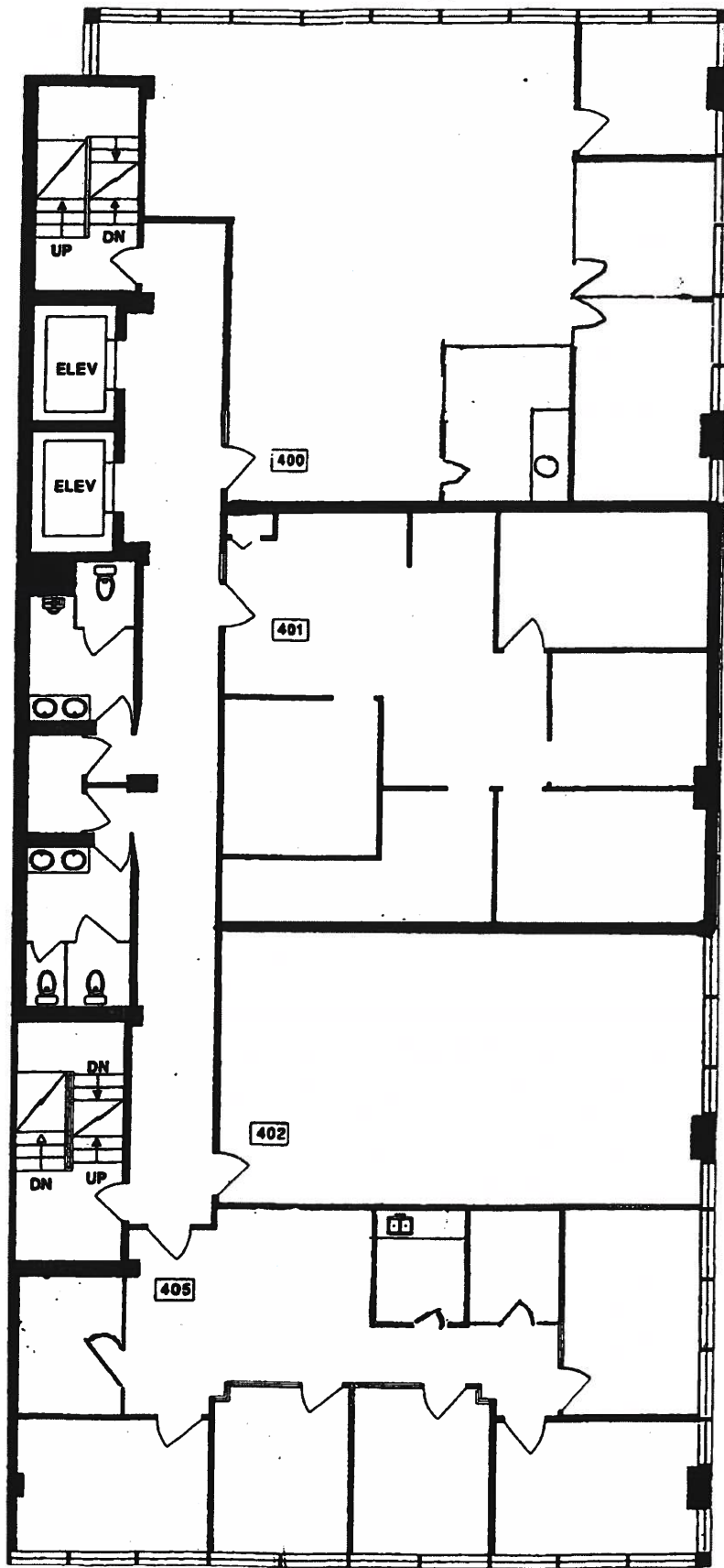
Suite 401 – 1,309 Sq ft

NNN rate ask representative

Operating expenses and Property Tax: Est. for 2021 \$17.95/Sq ft

889 W. PENDER ST.,
VANCOUVER, B.C.

FOURTH FLOOR



SCALE

MEASURE MASTERS
VANCOUVER CITY
(604) 631-6665

DRAWN: AUG. 2001
REV: OCTOBER 2002